

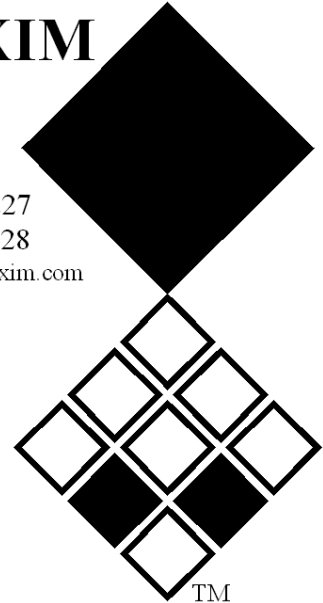
# User Manual and Parts List Easy Core

**Model:**

**Serial Number:**

**REDEXIM**

Kwekerijweg 8  
3709 JA Zeist  
the Netherlands  
T: (31)30 6933227  
F: (31)30 6933228  
E: [verti-drain@redexim.com](mailto:verti-drain@redexim.com)  
[www.redexim.com](http://www.redexim.com)



Translation of the original operating  
instructions





**CAUTION:**  
FOR THE SAFE USE OF THE MACHINE AND FOR THE BEST RESULTS IT IS OF THE  
UTMOST IMPORTANCE THAT YOU READ THIS USER MANUAL CAREFULLY BEFORE  
USING THE EASY CORE.

## PREFACE

Congratulations with your Easy Core purchase. For the safe and prolonged operation of this Easy Core, it is necessary to (have) read and understand this user manual. Without the complete knowledge of the contents, you cannot operate this machine safely.

On the following page, the general safety instructions will be discussed first. Every user should know and follow these. After this, a registration card is included, which should be returned by mail, in order to be able to handle any future claims.

In this user manual, many instructions are in numerical order.

You should follow this order when taking any actions. Where the  symbol appears, it indicates safety instructions. Where the  symbol is used, it indicates a hint and/or note.

## GUARANTEE PROVISIONS

THIS EASY CORE IS SUPPLIED WITH A GUARANTEE AGAINST MATERIAL DEFECTS. THIS GUARANTEE IS VALID FOR A PERIOD OF 12 MONTHS FROM THE DATE OF PURCHASE.

EASY CORE GUARANTEES ARE SUBJECT TO THE "GENERAL CONDITIONS FOR SUPPLY OF PLANT AND MACHINERY FOR EXPORT, NUMBER 188", WHICH ARE PUBLISHED UNDER THE AUSPICES OF THE UNITED NATIONS ECONOMIC COMMISSION FOR EUROPE.

All information and technical specifications provided at the moment that this document is published are the most recent ones. Design specifications may be changed without prior notice.

This document is a translation of the original operating instructions. Upon request, the original operating instructions are available in Dutch.

## REGISTRATION CARD

Please fill in the form below for your own reference:

Serial number of machine	
Dealer name	
Purchase date	
Remarks	

## ! SAFETY REGULATIONS !

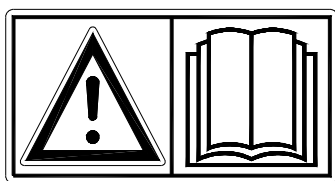


Fig.1

The Easy Core is designed for safe use. This is only possible if the safety instructions as described in this manual are observed in full.  
Please read and understand (Fig.1) the manual before you start using the Easy Core.  
If the machine is not used, as described in the manual, personal injury and/or damage to the Easy Core may occur.

- 1) When using the machine, the operator should be skilled.  
The manufacturer does not accept any responsibility for incompetent use and the damage resulting from this; all risks that occur under such circumstances are the sole responsibility of the user.  
Incompetent use also includes not following the instructions for use, maintenance and repair as prescribed by the manufacturer.

Before using the Easy Core, please inspect the area to be treated.  
Remove loose obstacles and avoid irregularities.

- 2) The Easy Core is manufactured in accordance with the latest technological knowledge, and can be used safely.  
If the machine is used, maintained or repaired by incompetent persons, injury to both the user and third parties may occur.  
**This should be avoided!**
- 3) Any person appointed by the owner to operate, maintain or repair the Easy Core must have read and fully understood the user manual and especially the Chapter **Safety Regulations**.

The user is responsible for the safe use of the **Easy Core**.

- 4) The user is **obliged to check for any visible damage or defects**, before he/ she uses the Easy Core.  
Modifications to the Easy Core (including its operation) that adversely affect the safety must be immediately remedied.  
Any modifications or additions to the Easy Core (except for those approved by the manufacturer) are in principle prohibited because of safety considerations.

If **modifications** have been carried out to the Easy Core, the current CE marking will no longer be valid, and the person who carried out the modifications must **personally** take care of a new **CE marking**.

Check the Easy Core, before every operation, for loose bolts/ nuts/ parts.

If present, regularly check the hydraulic hoses and replace them if they are damaged or show signs of ageing. The replacement hoses must comply with the technical requirements of the manufacturer.

If present, the hydraulic unit must **always** be made pressure-free, before activities are carried out on it.

If the protective covers and safety stickers are absent, the Easy Core must **NEVER** be used.

**NEVER** crawl under the Easy Core.  
If necessary, you can tilt the Easy Core.

During maintenance, set up and repairs it is necessary to secure the Easy Core against sinking/ driving off/ slipping away.

Always switch off the engine and disconnect the spark plug cable from the spark plug during maintenance, set up and repairs. (Fig.2)

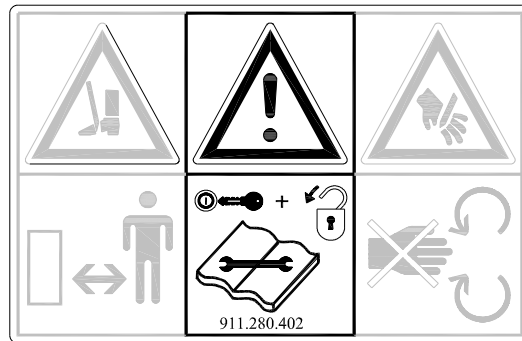


Fig.2

Only use original Easy Core parts for maintenance and repair, to ensure the safety of the machine and the operator.

Repair activities on the Easy Core may only be carried out by authorised technical staff.

Please keep a summary of the repairs.

- 5) Apart from the instructions in this user manual, the generally applicable, as well as the Occupational Health and Safety Act, provisions must also be obeyed.

When the machine is used on the public road, the applicable provisions of the traffic regulations also apply.

The transport of people is not allowed!

Do not use the Easy Core in the dark, during heavy rain/storm or on slopes with a gradient exceeding 15 degrees.

- 6) Before starting the activities, all persons who will operate the Easy Core must be informed of all the functions and operating elements thereof.

On both sides of the Easy Core and on the rear and front cover, safety stickers are attached with an identical meaning. These safety stickers must always be clearly visible and readable, and must be replaced if damaged.

During operation, **NO persons without the proper personal protection may be present in the danger area** of the Easy Core, since there is danger of personal injury resulting from moving parts. (Fig.4)

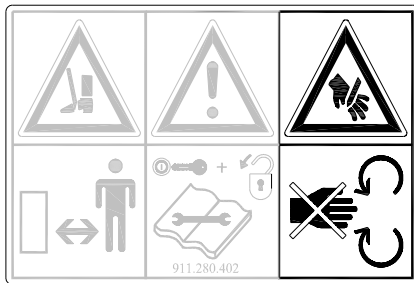


Fig.4

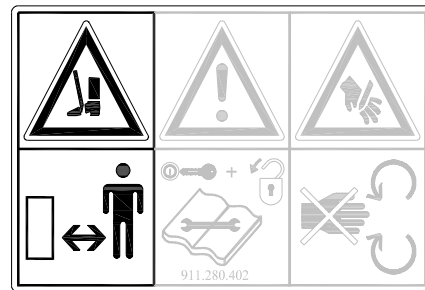


Fig.5

**For bystanders without personal protective gear: please keep a minimum distance of 4 metres!** (Fig.5)

Be dressed correctly. Wear sturdy shoes with a steel toecap, long trousers, tie up long hair, and do not wear loose clothing.

Use the correct personal protective gear in accordance with the applicable Occupational Health and Safety Act and safety provisions.



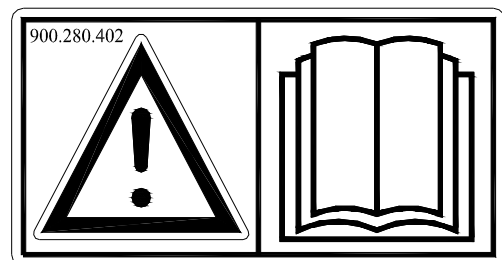
Fig.6

**Use certified hearing protection when using the machine!** (Fig.6)

## 7) Safety and indication stickers



911.280.402



900.280.402



911.340.410



900.280.404



917.340.400



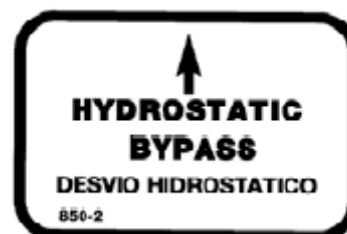
917.340.402



917.340.404 (208 only)



917.340.406 (208 only)



917.340.408 (208 only)

Description of stickers	
917.260.410	Model sticker Easy Core 104
917.260.412	Model sticker Easy Core 106
917.260.414	Model sticker Easy Core 108
917.260.416	Model sticker Easy Core 116
917.260.418	Model sticker Easy Core 208
911.280.402	Safety sticker concerning the use of machine
900.280.402	Safety sticker concerning reading the manual
911.340.410	Safety sticker concerning wearing hearing protection
900.280.404	Safety sticker in order to prevent crushed fingers
917.340.400	Warning to lift the cover straight up in order to avoid back injuries
917.340.402	Operating handle to turn on the pins
917.340.404	Operating handle for forward movement / pins up
917.340.406	Operating handle to turn on the pins
917.340.408	Hydrostat switch

## TABLE OF CONTENTS

PREFACE .....	2
GUARANTEE PROVISIONS .....	2
REGISTRATION CARD.....	2
SAFETY REGULATIONS .....	3
1.0 TECHNICAL DATA.....	8
2.0 ASSEMBLY INSTRUCTIONS.....	9
3.0 USER MANUAL.....	10
4.0 EU DECLARATION .....	11
5.0 MAINTENANCE .....	12

## 1.0 TECHNICAL DATA

Model	104	106	108	208	116
Engine	BUS 5.5 HP	Honda 5 HP	Honda 5 HP	Honda 5.5 HP	Kohler 12 HP
Operating width	360 mm (14.2")	540 mm (21.3")	520 mm (20.5")	520 mm (20.5")	1,100 mm (43.3")
Operating depth, up to	70 mm (2 3/4")	70 mm (2 3/4")	70 mm (2 3/4")	70 mm (2 3/4")	70 mm (2 3/4")
Hole distance	90 x 150 mm (3 5/8" x 6")	90 x 150 mm (3 5/8" x 6")	65 x 170 mm (2 1/4" x 7")	65 x 170 mm (2 1/4" x 7")	65 x 170 mm (2 1/4" x 7")
Capacity, up to	2043 m <sup>2</sup> /h (21990 ft <sup>2</sup> /h)	2550 m <sup>2</sup> /h (27448 ft <sup>2</sup> /h)	2550 m <sup>2</sup> /h (27448 ft <sup>2</sup> /h)	2780 m <sup>2</sup> /h (29924 ft <sup>2</sup> /h)	7800 m <sup>2</sup> /h (83959 ft <sup>2</sup> /h)
Number of pins	4	6	8	8	16
Standard hollow pin	22 x 16 x 70 mm (7/8" x 5/8" x 2 3/4")	22 x 16 x 70 mm (7/8" x 5/8" x 2 3/4")	22 x 16 x 70 mm (7/8" x 5/8" x 2 3/4")	22 x 16 x 70 mm (7/8" x 5/8" x 2 3/4")	22 x 16 x 70 mm (7/8" x 5/8" x 2 3/4")
Optional hollow pin	16 x 9.5 x 70 mm (5/8" x 3/8" x 2 3/4")	16 x 9.5 x 70 mm (5/8" x 3/8" x 2 3/4")	16 x 9.5 x 70 mm (5/8" x 3/8" x 2 3/4")	16 x 9.5 x 70 mm (5/8" x 3/8" x 2 3/4")	16 x 9.5 x 70 mm (5/8" x 3/8" x 2 3/4")
Optional massive pins	9.5 x 70 mm (3/8" x 2 3/4") 22 x 70 mm (7/8" x 2 3/4")	9.5 x 70 mm (3/8" x 2 3/4") 22 x 70 mm (7/8" x 2 3/4")	9.5 x 70 mm (3/8" x 2 3/4") 22 x 70 mm (7/8" x 2 3/4")	9.5 x 70 mm (3/8" x 2 3/4") 22 x 70 mm (7/8" x 2 3/4")	9.5 x 70 mm (3/8" x 2 3/4") 22 x 70 mm (7/8" x 2 3/4")
Operating dimensions	1600 x 620 x 950 mm (63" x 24.4" x 37.4")	1600 x 800 x 950 mm (63" x 31.5" x 37.4")	1600 x 800 x 950 mm (63" x 31.5" x 37.4")	850 x 1700 x 950 mm (33.5" x 67" x 37.4")	1700 x 1440 x 850 mm (67" x 56.7" x 33.5")
Weight	94 kg (207 lbs)	113 kg (249 lbs)	136 kg (300 lbs)	146 kg (322 lbs)	326 kg (719 lbs)
Shipping dimensions	1300 x 660 x 960 mm (51.2" x 26" x 37.8")	1080 x 800 x 680 mm (42.5" x 31.5" x 26.8)	1080 x 800 x 680 mm (42.5" x 31.5" x 26.8)	1260 x 1050 x 890 mm (49.6 x 41.3" x 35")	1600 x 1350 x 1,000 mm (63" x 53.1" x 39.4")
Shipping weight	115 kg (254 lbs)	135 kg (298 lbs)	145 kg (320 lbs)	162 kg (357 lbs)	367 kg (809 lbs)
Engine oil	SAE 30	SAE 30	SAE 30	SAE 30	SAE 30
footboard	No	No	No	Yes	No



## 2.0 ASSEMBLY INSTRUCTIONS

### **Assembly of Easy Core 104**

**Operating handle:** The foldaway operating handle has already been mounted in advance. In order to use the machine, the handle must be turned to the rear. To do this, you first pull back the handle retainer, and turn the handle backwards. Then you push the retainer back so that the operating handle is in a locked position. Apply this method in reverse order in order to bring the operating handle back to the transport position.

### **Assembly of Easy Core 106 and 108: please refer to Figure at point 3.0 user manual**

**Operating handle:** Push the operating handle over the two projecting frame pins. The control handle should now point upwards. Mount the locking pins and secure them with the two locking clamps, or in whatever way the handle is mounted and secured.

**Pullback cable:** Massive steel wire with identical ends, mounted on one side of the black pullback plate. This has already been mounted in advance. On the other end, the cable should be mounted to the central handle (no. 1). Mount the cable by means of the locking pin and locking clamp.

**Coupler flange:** Massive rod with a yoke on one end. Remove the cover from the machine and localise the yoke on the machine at the bottom right. Turn the rod into the yoke, up to the adjustment nut (note: thread is left, so the rod must be turned counter-clockwise). Attach the yoke end of the rod to the lower handle (no. 2) using the supplied locking pin and locking clamp. Both yokes must now be secured with both of the adjustment nuts.

### **Assembly of Easy Core 208**

**Operating handle:** Push the operating handle over the two projecting frame pins. The control handle should now point upwards. Mount the locking pins and secure them with the two locking clamps, or in whatever way the handle is mounted and secured.

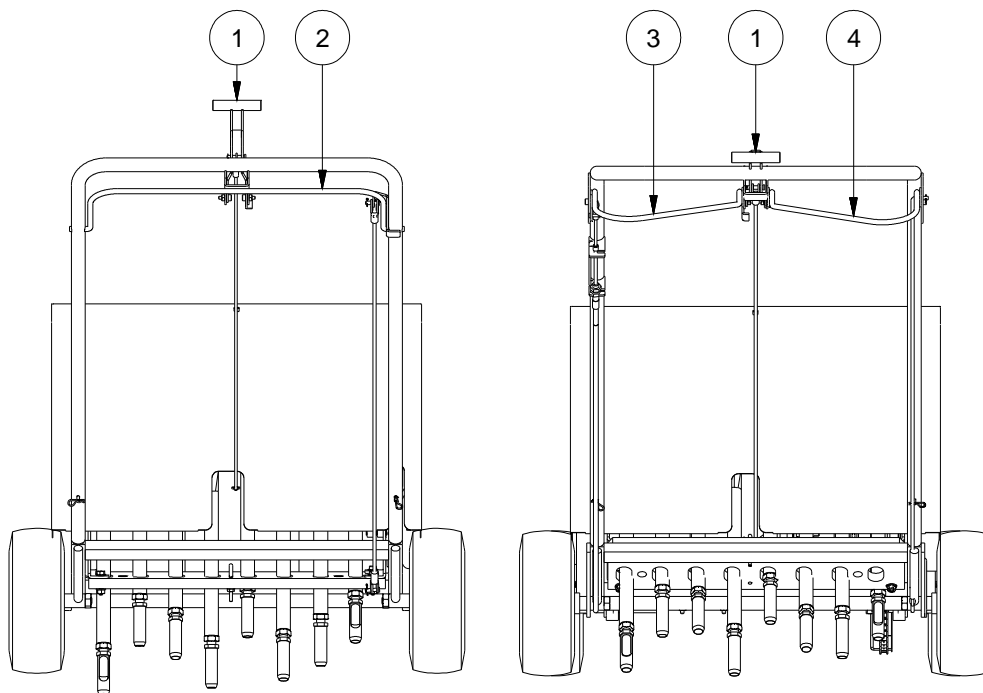
**Hydrostat control:** The left handle (no. 3) operates the hydrostat. Remove the split pin, mount the cable's ball joint, and attach the split pin again. Mount the outer cable's nuts on the operating handle.

**Pullback cable:** Massive steel wire with identical ends, mounted on one side of the black pullback plate. This has already been mounted in advance. On the other end, the cable should be mounted to the central handle (no. 1). Mount the cable using the locking pin and split pin.

**Coupler flange:** Massive rod with a ball joint on one end. Remove the cover from the machine and localise the ball on the machine at the bottom right. Mount the ball joint, in the bottom right of the machine, to the ball. Mount the other end of the rod to handle no. 4 and secure it with the split pin.

**Hydrostat:** The hydrostat was fully inspected and checked, and is ready for use. The handle on the front of the machine, marked as "Hydrostat Bypass", should be switched down, in enable the use of the hydrostat.

### 3.0 USER MANUAL



#### **User manual Easy Core 104, 106, 108, and 208**

**Lower handle:** The lower handle (2) operates the idler for the drive V-belts. Pull the handle up to switch on. The handle should be kept pulled up to operate the machine. If it is released, the forward motion will stop. If the handle does not shoot back, when released, please contact the manufacturer or the dealer to remedy this, since it is very important for your safety.

**Central handle:** The central handle (1) ensures that the aeration mechanism of the Easy Core is moved forward into operating position. Move the handle forward. The aeration mechanism will automatically place itself in the correct position.

**Aerating:** Pull the lower handle (2) up and keep it tight. Then move the central handle (1) forward and let the aeration mechanism move itself into the operating position. Do not push the machine as soon as it starts operating; due to the movement of the pins it will start to drive forwards.

With the Easy Core 208, the right handle (4) ensures that the drive for the V-belts is switched on. During aeration, the machine is moved forwards hydraulically by operating the left handle (3). To stop the aeration, you release both handles (3 & 4).

**Stop:** Release the lower handle, to stop. It will automatically shoot back and switch off the idler. Pull back the central handle to pull the aeration mechanism out of the soil. Switch off the engine, if the machine is not be used any more.

**Removing the cover:** To remove the cover, the central bolt and rubber hoses must be removed. To mount the cover again, you should follow the same procedure in the reverse order.

**Use under cold conditions:** Switch the aeration mechanism to the “upward” position for at least two minutes, to warm the grease.

## **User manual for Easy Core 116**

- Adjust the length of the draw hook so that the pulling vehicle does not touch the machine when turning corners.
- Install the control box on the respective vehicle, in a location where it can be operated easily.
- Ensure that the wire cannot become stuck somewhere or stretch during use.
- Start the engine and turn at full speed.
- Drive to the desired location to be aerated, with the Easy Core in the upright position.
- Lower the machine until it cannot be lowered any further.
- The pulling vehicle must be moving forwards before the aeration mechanism can be switched on.
- After this, start driving forwards at a speed between 3-5 km/h (2-3 mph).
- Switch on the aeration mechanism and adjust the speed, so the green light is on continuously.
- Slow down if the red "fast" light is on.
- Increase the speed if the red "slow" light is on, (this results in damage to the Easy Core and soil)
- It is possible to make gradual turns during the aeration process.
- Switch off the aeration mechanism and lift it from the soil when making sharp turns.

## **4.0 EU DECLARATION**

The product:

**EASY CORE WITH MACHINE NUMBER AS INDICATED ON THE MACHINE AS WELL AS IN THIS MANUAL.**

to which this declaration relates is according to the stipulation of the 2006/42/EC directive for machines.

Zeist, 01/10/09



**A.C. Bos**  
Manager Operations & Logistics  
Redexim Holland

## 5.0 MAINTENANCE

Model	Time frame	Check point / lubricating point	Method
<b>all models</b>		engine/oil filter	Please follow the instructions from the engine manufacturer, however, change oil and/or filters at least once a year
<b>104 106 108</b>	Before each operation	<ul style="list-style-type: none"> <li>- Check for loose bolts / nuts</li> <li>- Presence and readability of the safety stickers</li> </ul>	<ul style="list-style-type: none"> <li>- Tighten the loose bolts / nuts</li> <li>- Replace them if not present / damaged</li> </ul>
	After each 10 hours of operation	<ul style="list-style-type: none"> <li>- Check the tension of the V-belt</li> <li>- Check for loose bolts / nuts</li> <li>- Lubricate cam bearings</li> </ul>	<ul style="list-style-type: none"> <li>- Adjust the tension of the V-belt if necessary</li> <li>- Tighten the loose bolts / nuts</li> <li>- 2 shots of EP2</li> </ul>
	After every 100 hours of operation or annually	<ul style="list-style-type: none"> <li>- Check for loose bolts / nuts</li> <li>- Check the roll bearings and the drive line</li> <li>- Check the tension / wear of the V-belt</li> <li>- Lubricate spindle and wheel bearings</li> </ul>	<ul style="list-style-type: none"> <li>- Tighten the loose bolts / nuts</li> <li>- Replace these parts if necessary</li> <li>- Adjust the tension of the V-belt if necessary</li> <li>- Or replace the V-belt if necessary</li> <li>- 2 shots of EP2</li> </ul>
<b>208</b>	Before each operation	<ul style="list-style-type: none"> <li>- Check for loose bolts / nuts</li> <li>- Existence and readability of the safety stickers</li> </ul>	<ul style="list-style-type: none"> <li>- Tighten the loose bolts / nuts</li> <li>- Replace them, if not present or damaged</li> </ul>
	After every 10 hours of operation	<ul style="list-style-type: none"> <li>- Check the tension of the V-belts</li> <li>- Check for loose bolts / nuts</li> <li>- Lubricate cam bearings</li> </ul>	<ul style="list-style-type: none"> <li>- Adjust the tension of the V-belts if necessary</li> <li>- Tighten the loose bolts / nuts</li> <li>- 2 shots of EP2</li> </ul>
	After every 20 hours of operation	<ul style="list-style-type: none"> <li>- Lubricate the bearings of the hydrostatic drive. These are located next to the coupling belts</li> </ul>	<ul style="list-style-type: none"> <li>- 2 shots of EP2</li> </ul>
		<ul style="list-style-type: none"> <li>- Lubricate front wheel spindle</li> </ul>	<ul style="list-style-type: none"> <li>- 2 shots of EP2</li> </ul>

	After every 100 hours of operation or annually	<ul style="list-style-type: none"> <li>- Check for loose bolts / nuts</li> <li>- Check the roll bearings and the drive line</li> </ul>	<ul style="list-style-type: none"> <li>- Tighten the loose bolts / nuts</li> <li>- Replace these parts if necessary</li> </ul>
		<ul style="list-style-type: none"> <li>- Check the tension / wear of the V-belts</li> <li>- Lubricate spindle and wheel bearings</li> </ul>	<ul style="list-style-type: none"> <li>- Adjust the tension of the V-belts if necessary</li> <li>- Or replace the V-belts if necessary</li> <li>- 2 shots of EP2</li> </ul>
<b>116</b>	Before each operation	<ul style="list-style-type: none"> <li>- Check for loose bolts / nuts</li> <li>- Existence and readability of the safety stickers</li> </ul>	<ul style="list-style-type: none"> <li>- Tighten the loose bolts / nuts</li> <li>- Replace them, if not present or damaged</li> </ul>
	After every 10 hours of operation	<ul style="list-style-type: none"> <li>- Check the roll bearings and the drive line</li> <li>- Check the tension of the chain</li> <li>- Check for loose bolts / nuts</li> <li>- Lubricate cam bearings</li> </ul>	<ul style="list-style-type: none"> <li>- Replace these parts if necessary</li> <li>- Adjust the tension of the chain if necessary</li> <li>- Tighten the loose bolts / nuts</li> <li>- 2 shots of EP2</li> </ul>
	After every 100 hours of operation or annually	<ul style="list-style-type: none"> <li>- Check for loose bolts / nuts</li> <li>- Check the roll bearings and the drive line</li> <li>- Check the tension / wear of the chain</li> <li>- Lubricate chain</li> <li>- Lubricate spindle and wheel bearings</li> </ul>	<ul style="list-style-type: none"> <li>- Tighten the loose bolts / nuts</li> <li>- Replace these parts if necessary</li> <li>- Adjust the tension of the chain if necessary</li> <li>- Or replace the chain if necessary</li> <li>- Use a universal chain grease</li> <li>- 2 shots of EP2</li> </ul>

## **GENERAL REMARKS ON MAINTENANCE**

**Tightening the V-belts:** Tighten the V-belts by using the adjustment holes inside the rotating handle of the coupling. It should only be necessary to move it to the next hole. Do not over tighten the belts. This could result in a too great a load on the engine's spindle bearings. The V-belts are sufficiently tight when they do not slip during the operating cycle.

**Tightening the chain (Easy Core 116 only):** Tighten the chain tension by using the holes inside the engine plate. Do not over tighten the chain. This could result in a too great a load on the engine's gearbox bearings. The chain is tight enough if it is not slack during the operating cycle.

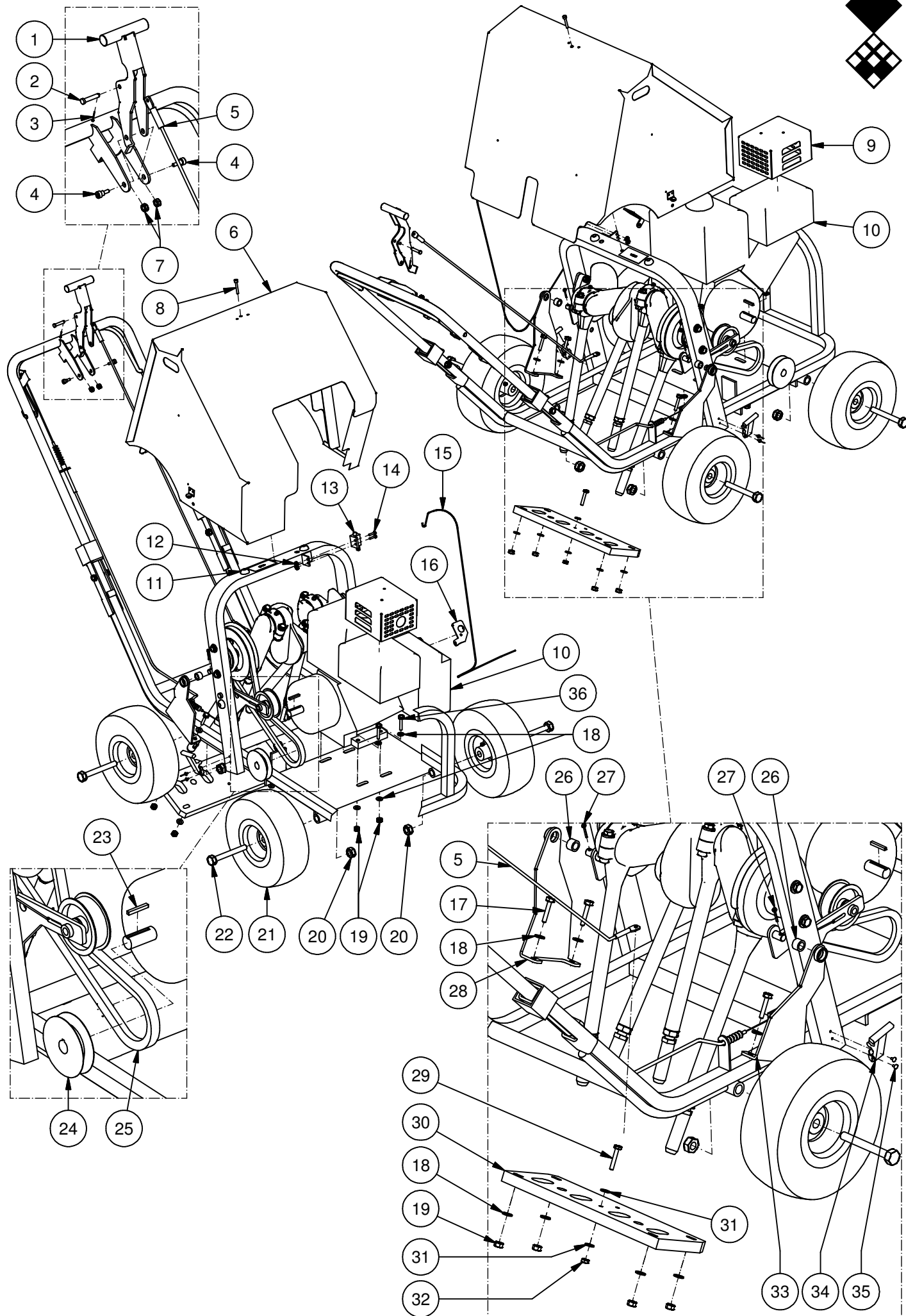
**Pins:** These are adjustable, but the maximum adjustment course is the thickness of the adjustment nut, around 6.5 mm (1/4"). The openings of the pins must always be pointed to the rear of the machine. The pins can be replaced by loosening the adjustment nut and subsequently loosening the pin. Now mount the new pin with the adjustment nut. Mount the pin, by as many thread windings as possible, into the pin holder. Now tighten the adjustment nut against the pin holder.



**For the maintenance of the engine, see the supplied manual of the engine.**



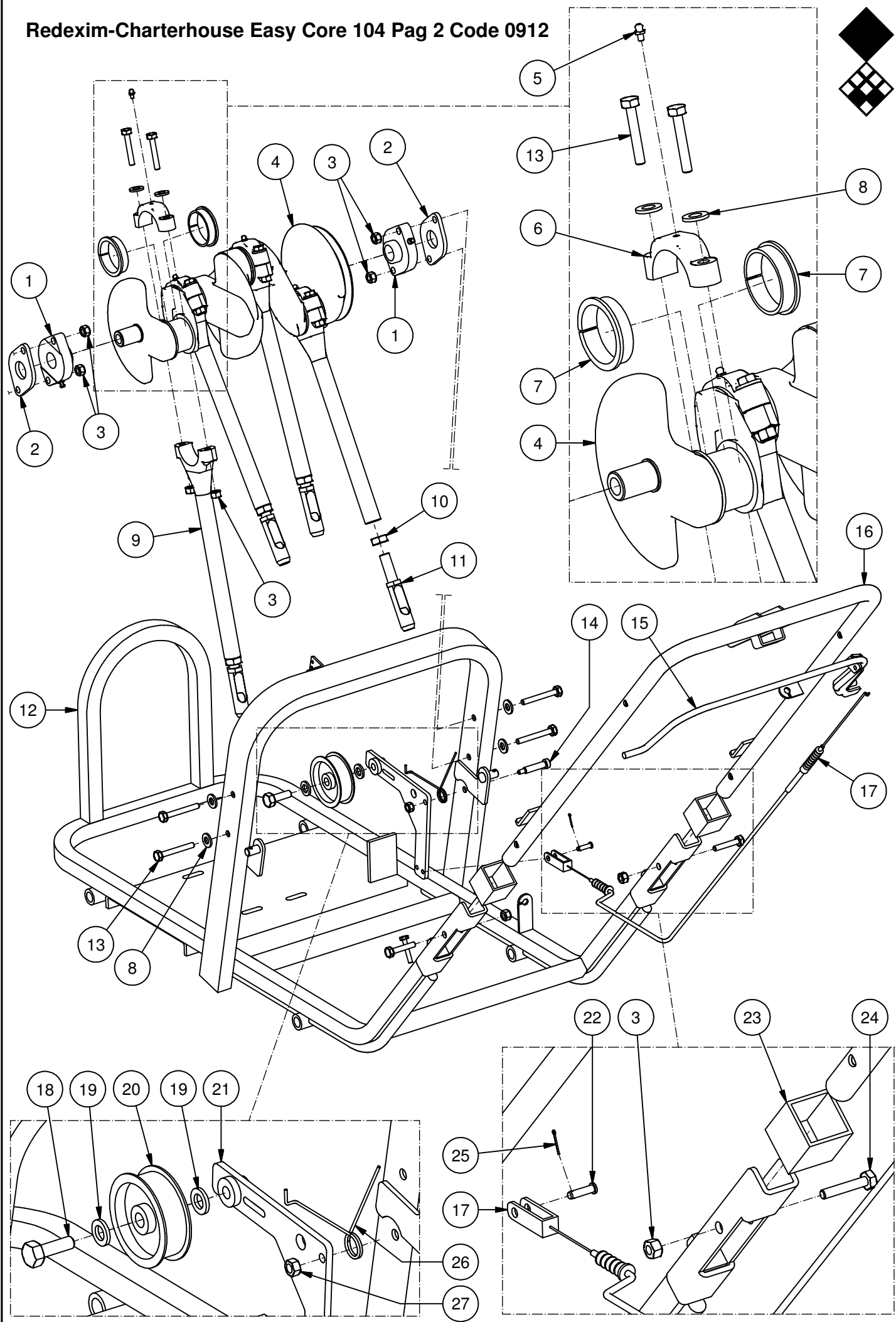






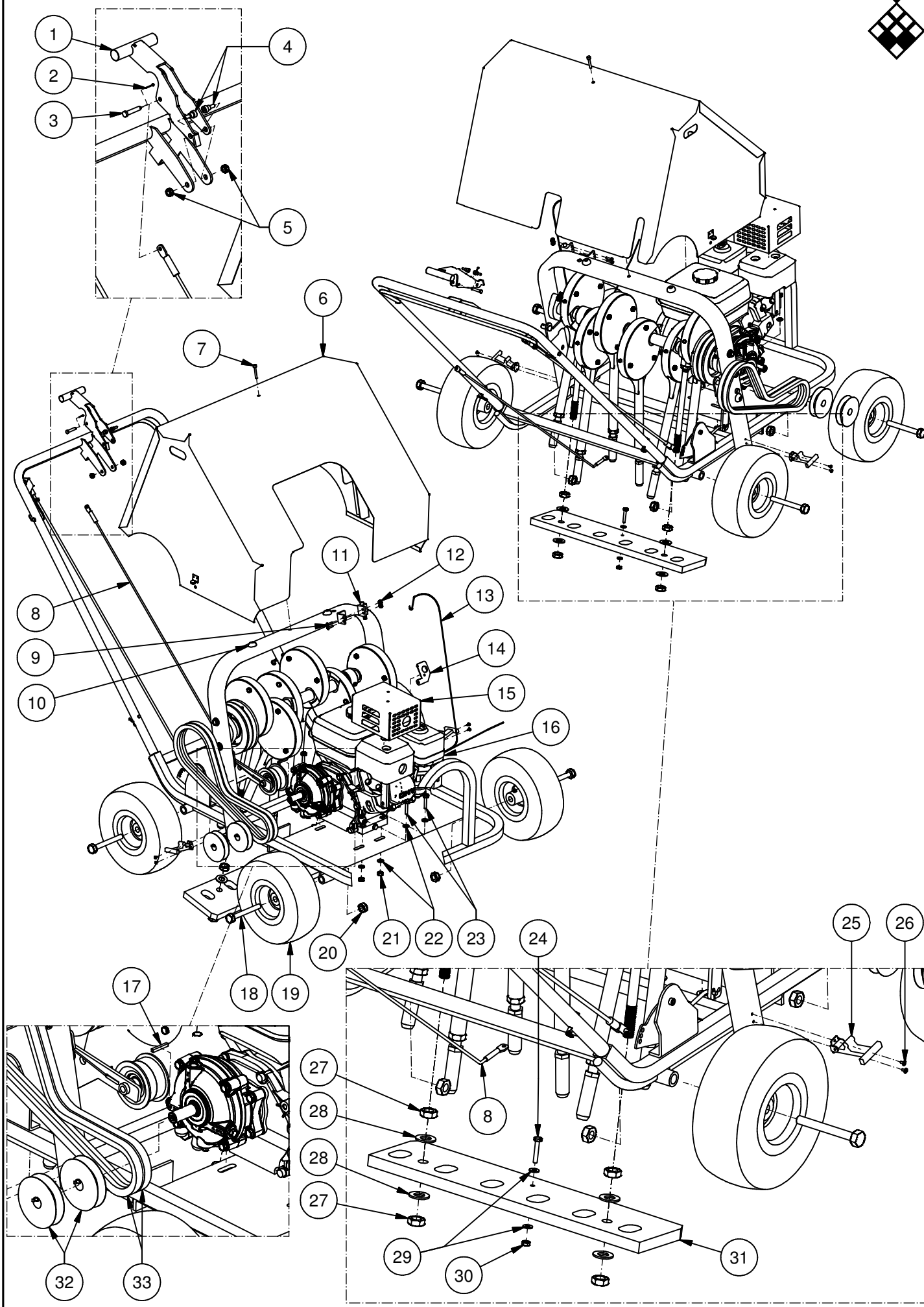
**Redexim-Charterhouse Easy Core 104 page1 code 0912**

	Part #	DESCRIPTION	REMARKS	QUA
1	E91.929.091	Retractor Handle		1
2	E91.939.495	Clevis Pin, 1/4 x 1"		1
3	E91.909.391	Cotter Pin, 1/16 dia x 3/4"		1
4	E91.919.598	Shoulder Bolt, 5/16 dia x 1/4"		2
5	E91.909.899	Control Cable Assembly		1
6	E91.919.393	Cover		1
7	E91.929.494	Lock Nut, 1/4-20 UNC		2
8	E91.919.595	Cover Screw, 1/4-20 SHCS		1
9	E91.919.29B	CE Required Muffler Guard B\$S		1
9	E91.919.29H	CE Required Muffler Guard Honda		1
10	E91.909.79B	Engine, Briggs & Stratton 5.5HP		1
10	E91.909.79H	Engine Honda 5HP		1
11	E91.919.196	Vibration Dampener		4
12	E91.919.194	Lock Nut, 10-24 UNC		2
13	E91.919.299	Safety Switch		1
14	E91.919.193	Button Head Screw, 10-24 UNC x 3/4"		2
15	E91.919.296	Wiring Harness		1
16	E91.919.390	Shutoff Switch Bracket		1
17	E91.919.493	Hex Head Bolt, 5/16-18 UNC x 1 1/2"		4
18	E91.909.195	Flat Washer, 5/16"		16
19	E91.909.196	Lock Nut, 5/16-18 UNC		8
20	E91.919.190	Lock Nut, 5/8-11 UNC		4
21	E91.909.699	Wheel w/ Grease Fittings		4
22	E91.919.099	Hex Head Bolt, 5/8-11 UNC x 4 1/2"		4
23	E91.919.293	Key		1
24	E91.909.198	Pulley, Engine		1
25	E91.909.793	V-Belt, Cogged, 38"		1
26	E91.919.699	Pivot Bushing		2
27	E91.959.293	Cotter Pin 1/8" dia x 1"		2
28	E91.919.794	Pivot Bracket L.H.		1
29	E91.909.498	Hex bolt, 1/4-20 UNC - 1 1/2"		1
30	E91.909.997	Retractor Plate		1
31	E91.909.991	Flat Washer 1/4"		2
32	E91.909.299	Lock Nut, 1/4 x 20 UNC		1
33	E91.919.793	Pivot Bracket R.H.		1
34	E91.909.093	Rubber Latch Kit		2
35	E91.919.195	Stainless Rivet, 1/8 dia x 1/4"		4
36	E91.929.498	Hex head bolt, 5/16 - 18 UNC x 1 3/4		4



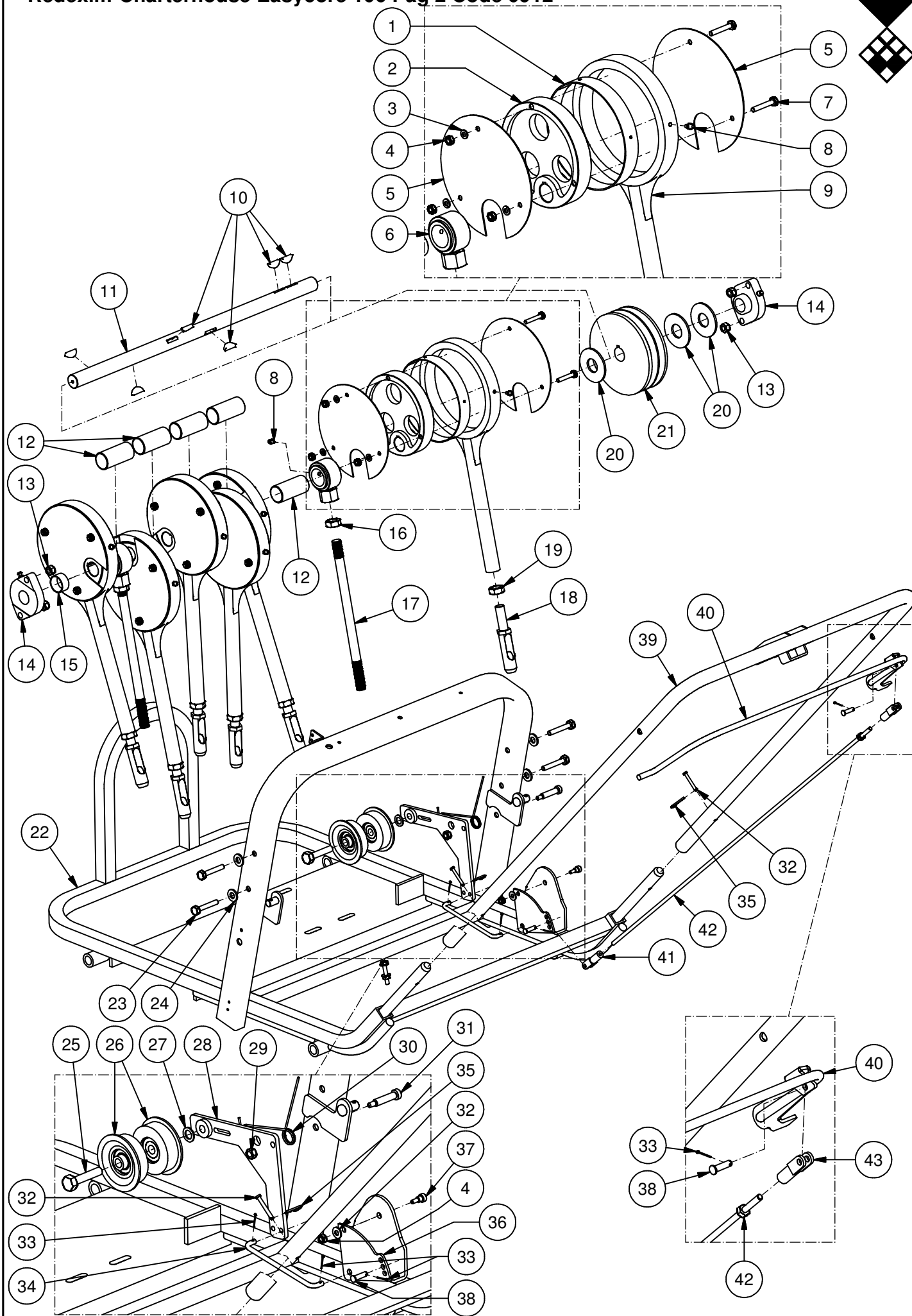
**Redexim-Charterhouse Easy Core 104 page 2 code 0912**

	PART #	DESCRIPTION	REMARKS	QUA
1	E91.909.492	Cartridge Bearing		2
2	E91.959.296	Bearing Spacer		2
3	E91.909.495	Lock Nut, 3/8-16 UNC		14
4	E91.929.996	Crankshaft		1
5	E91.909.592	Grease Fitting		4
6	E91.919.796	Tine Rod Cap		4
7	E91.919.797	Journal Bearing		8
8	E91.909.494	Flat Washer, 3/8"		12
9	E91.919.795	Tine Rod		4
10	E91.909.691	Hex Jam Nut, 5/8-18 UNF		4
11	E91.909.597	Standard Hollow Tine, 5/8" (22x16x70 mm)		4
	E91.919.499	Optional Solid Tine, 7/8" (22x70 mm)		4
	E91.919.590	Optional Hollow Tine, 3/8" (16x9,5x70 mm)		4
	E91.919.591	Optional Solid Tine, 3/8" (9,5x70 mm)		4
	E91.919.592	Optional Hollow Tine, 1 1/2" (45x38x70 mm)		4
12	E91.919.392	Frame w/o Handle		1
13	E91.919.492	Hex Head Bolt, 3/8-16 UNC x 2"		12
14	E91.919.491	Shoulder Bolt, 5/16-18 UNC x 1 3/8"		1
15	E91.929.897	Clutch Control Bar		1
16	E91.929.894	Handle		1
17	E91.919.490	Clutch Cable Assembly		1
18	E91.909.294	Hex Head Bolt, 1/2-13 UNC x 2"		1
19	E91.909.992	1/2" Machine Bushing		2
20	E91.909.292	Pulley, Clutch		1
21	E91.919.397	Clutch Bracket		1
22	E91.909.797	Clevis Pin, 1/4 x 3/4 "		1
23	E91.919.395	Lock Collar		2
24	E91.919.298	Hex Head Bolt, 3/8-16 UNC x 1 3/4"		2
25	E91.909.391	Cotter Pin, 1/16 dia x 3/4"		1
26	E91.919.398	Torsion Spring		1
27	E91.909.196	Lock Nut, 5/16-18 UNC		8



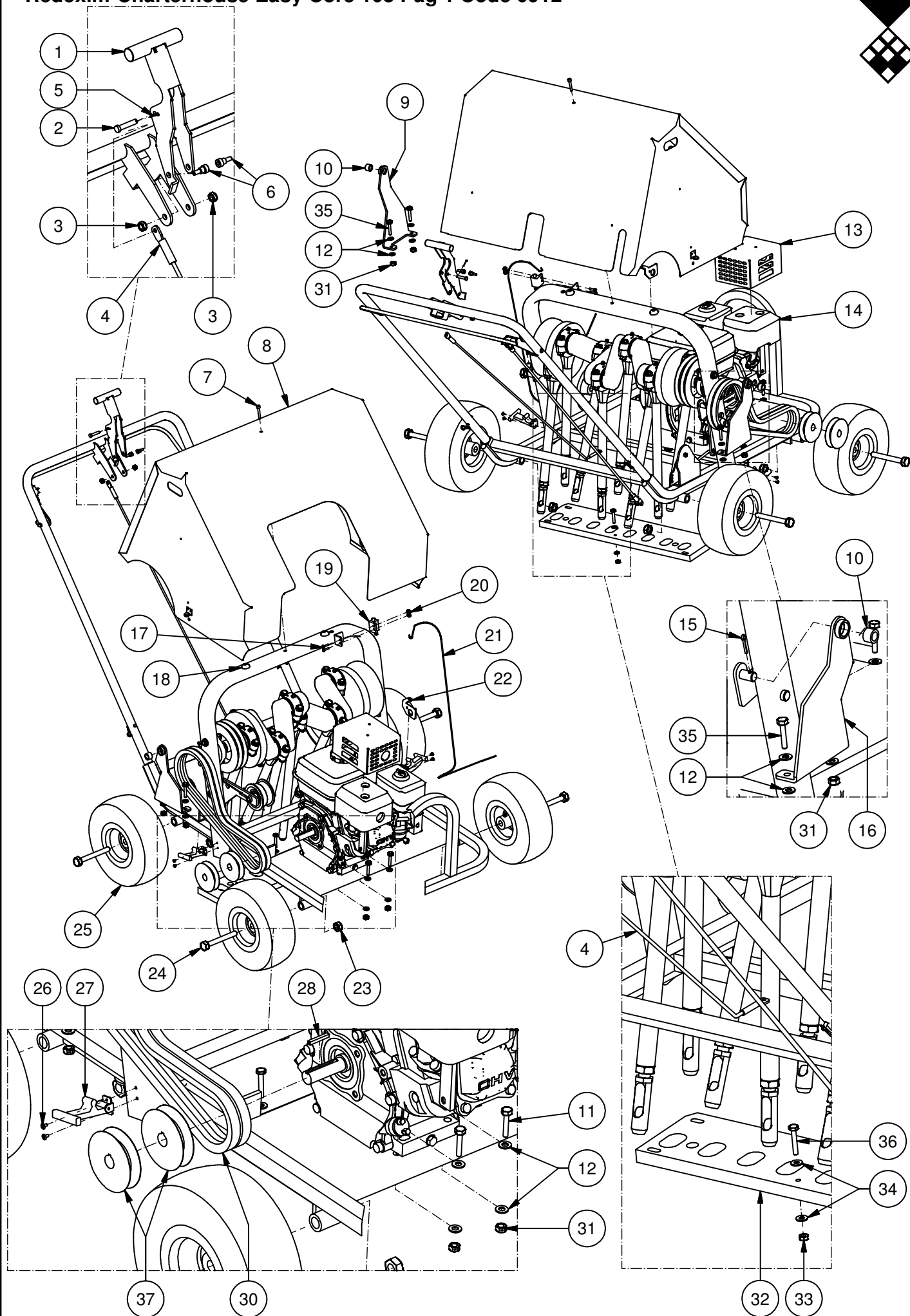
**Redexim-Charterhouse Easy Core 106 page 1 code 0912**

	PART #	DESCRIPTION	REMARKS	QUA
1	E91.929.091	Retractor Handle		1
2	E91.909.391	Cotter Pin, 1/16 dia x 3/4"		1
3	E91.939.495	Clevis Pin, 1/4 x 1"		1
4	E91.919.598	Shoulder Bolt, 5/16 dia x 1/4		3
5	E91.919.494	Lock Nut, 1/4-20 UNC		2
6	E91.919.198	Cover		1
7	E91.919.595	Cover Screw, 1/4-20 SHCS x 1 3/4"		1
8	E91.909.899	Control Cable Assembly		1
9	E91.919.193	Button Head Screw, 10-24 UNC x 3/4"		2
10	E91.919.196	Vibration Dampener		4
11	E91.919.299	Safety Switch		1
12	E91.919.194	Lock Nut, 10-24 UNC		2
13	E91.919.290	Wiring Harness		1
14	E91.919.390	Shut-Off Switch Bracket		1
15	E91.919.29H	CE Required Muffler Guard		1
16	E91.909.79H	Engine, Honda 5.5HP OHV		1
17	E91.919.293	Key		1
18	E91.919.099	Hex Head Bolt, 5/8-11 UNC x 4 1/2"		4
19	E91.909.699	Wheel w/ Grease Fitting		4
20	E91.919.190	Lock Nut, 5/8-11 UNC		4
21	E91.909.792	Lock Nut, 5/16-18 UNC		5
22	E91.909.195	Flat Washer, 5/16"		8
23	E91.929.498	Hex Head Bolt, 5/16 - 18 UNC x 1 3/4"		4
24	E91.909.498	Hex bolt, 1/4-20 UNC - 1 1/2"		1
25	E91.909.093	Rubber Latch Kit		2
26	E91.919.195	Stainless Rivet 1/8 dia x 1/4"		4
27	E91.909.691	Hex Jam Nut, 5/8-18 UNF		4
28	E91.909.693	Flat Washer, 5/8"		4
29	E91.909.991	Flat washer, 1/4		3
30	E91.909.299	*Varies*		1
31	E91.909.995	Retractor Plate		1
32	E91.909.198	Pulley, Engine		2
33	E91.909.793	V-Belt, Cogged		2



# Redexim-Charterhouse Easy Core 106 page 2 code 0912

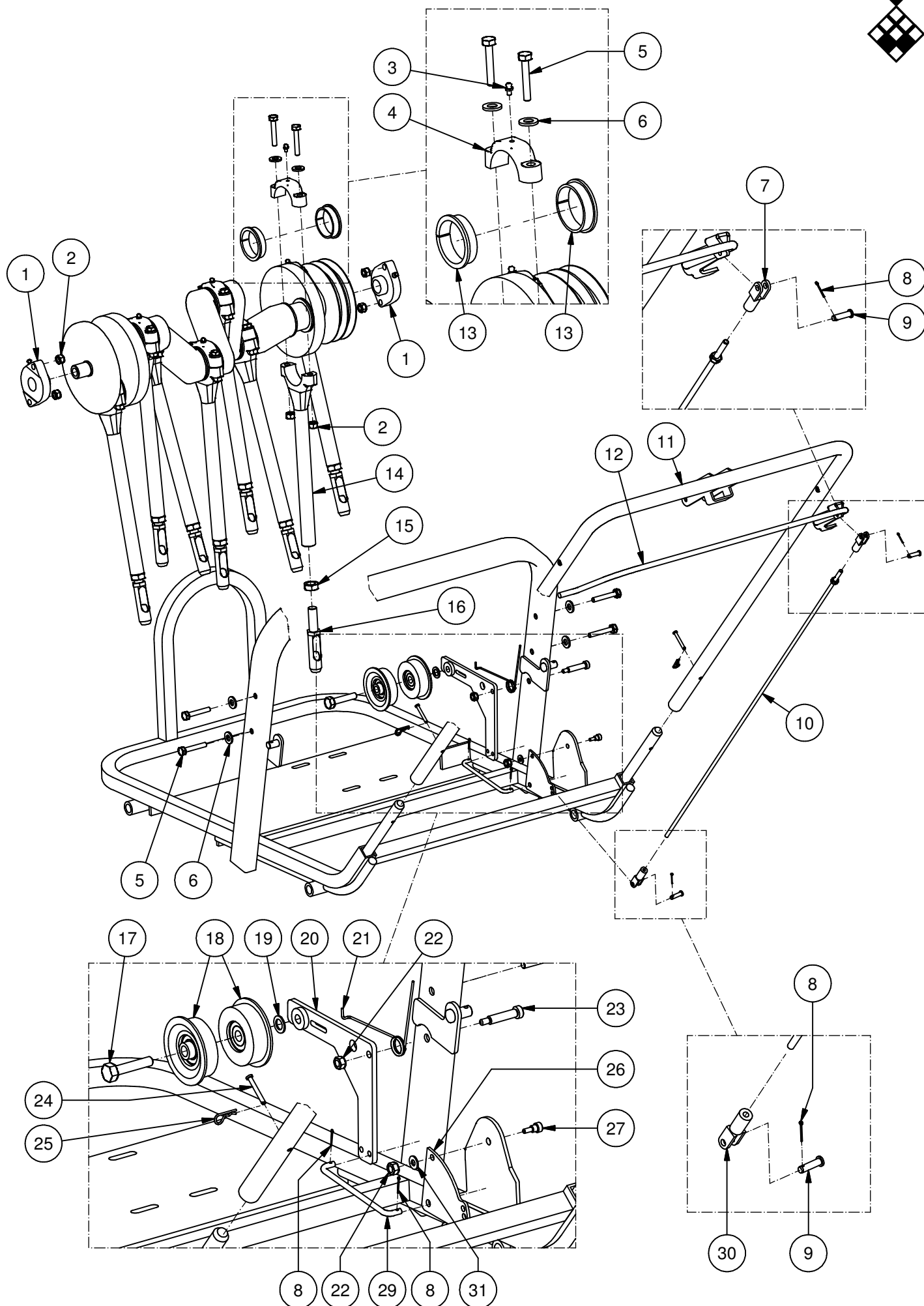
	PART #	DESCRIPTION	REMARKS	QUA
1	E91.909.593	Cam Bearing		6
2	E91.909.591	Cam, Machined		6
3	E91.919.892	Split Lock Washer, 1/4"		18
4	E91.909.299	*Varies*		19
5	E91.909.499	Cam Alignment Plate		12
6	E91.909.690	Hanger Rod Bearing w/ Bushing		2
7	E91.909.498	Hex Head Bolt, 1/4-20 UNC x 1 1/2"		18
8	E91.909.592	Grease Fitting		8
9	E91.909.590	Tine Casting		6
10	E91.909.594	Woodruff Key		7
11	E91.909.994	Drive Shaft		1
12	E91.909.599	Spacer, Long		5
13	E91.909.495	Lock Nut, 3/8-16 UNC		4
14	E91.909.492	Cartridge Bearing		2
15	E91.919.295	Spacer Short		1
16	E91.909.691	Hex Jam Nut, 5/8-18 UNF		6
17	E91.909.692	Hanger Rod		2
18	E91.909.597	Standard Hollow Tine, 5/8" (22x16x70 mm)		6
	E91.919.499	Optional Solid Tine, 7/8" (22x70 mm)		6
	E91.919.590	Optional Hollow Tine, 3/8" (16x9,5x70 mm)		6
	E91.919.591	Optional Solid Tine, 3/8" (9,5x70 mm)		6
	E91.919.592	Optional Hollow Tine, 1 1/2" (45x38x70 mm)		6
19	E91.909.596	Hex Jam Nut, 5/8-11 UNC		6
20	E91.909.497	Spacer Washer		3
21	E91.909.993	Pulley, Crank Shaft		1
22	E91.909.698	Frame w/o Handle		1
23	E91.919.492	Hex Head Bolt, 3/8-16 UNC x 2"		4
24	E91.909.494	Flat Washer, 3/8"		4
25	E91.909.798	Hex Head Bolt, 1/2-13 UNC x 2 1/2"		1
26	E91.909.799	Pulley, Clutch		2
27	E91.909.992	1/2" Machine Bushing		1
28	E91.919.397	Clutch Bracket		1
29	E91.909.792	Lock Nut, 5/16-18 UNC		5
30	E91.919.398	Torsion Spring		1
31	E91.919.491	Shoulder Bolt, 3/8-16 UNC x 1 3/8"		1
32	E91.919.095	Clevis Pin 3/16 dia x 1 1/4"		2
33	E91.909.391	Cotter Pin, 1/16 dia x 3/4"		4
34	E91.919.596	Clutch Linkage		1
35	E91.919.096	Hair Pin		2
36	E91.919.593	Pivot Plate		1
37	E91.919.598	Shoulder Bolt, 5/16 dia x 1/4"		1
38	E91.909.797	Clevis Pin, 1/4 x 3/4"		2
39	E91.929.896	Handle		1
40	E91.929.899	Clutch Control Bar		1
41	E91.929.395	Clevis Fitting, L.H.		1
42	E91.939.499	Clutch Handle Linkage		1
43	E91.929.394	Clevis Fitting, R.H.		1





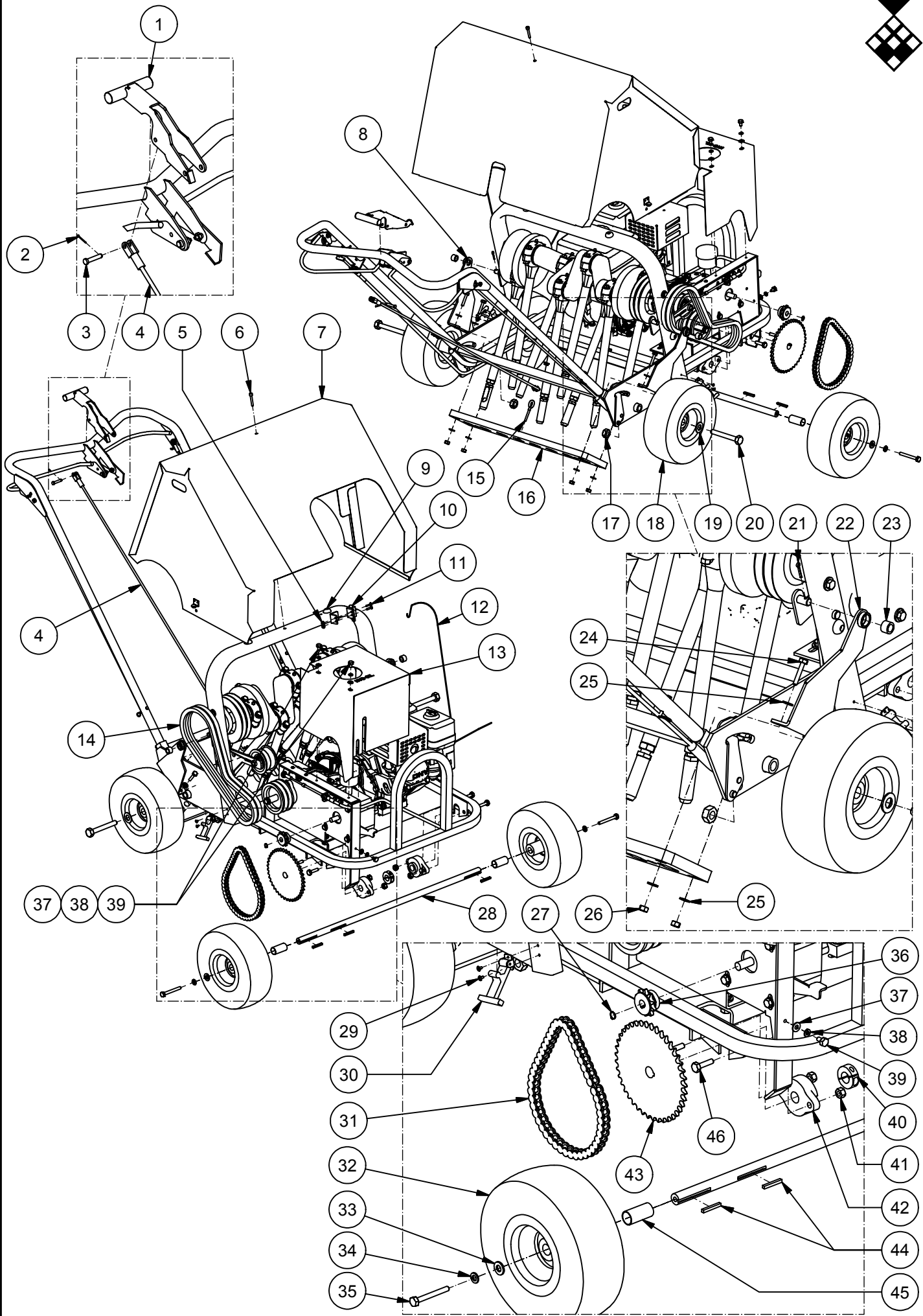
**Redexim-Charterhouse Easy Core 108 page 1 code 0912**

	PART #	DESCRIPTION	REMARKS	QUA
1	E91.929.091	Retractor Handle		1
2	E91.939.495	Clevis Pin, 1/4 x 1"		1
3	E91.929.494	Lock Nut, 1/4-20 UNC		2
4	E91.909.899	Control Cable Assembly		1
5	E91.909.391	Cotter Pin, 1/16 dia x 3/4"		1
6	E91.919.598	Shoulder Bolt, 5/16 dia x 1/4"		2
7	E91.919.595	Cover Screw, 1/4-20 SHCS		1
8	E91.919.198	Cover		1
9	E91.919.794	Pivot Bracket L.H.		1
10	E91.919.699	Pivot Bushing		2
11	E91.919.493	Hex Head Bolt, 5/16-18 UNC x 1 1/2"		4
12	E91.909.195	Flat Washer, 5/16"		16
13	E91.919.29H	CE Required Muffler Guard		1
14	E91.909.79H	Engine, Honda 5.5HP OHV		1
15	E91.959.293	Cotter Pin 1/8" dia x 1"		2
16	E91.919.793	Pivot Bracket R.H.		1
17	E91.919.193	Button Head Screw, 10-24 UNC x 3/4"		2
18	E91.919.196	Vibration Dampener		4
19	E91.919.299	Safety Switch		1
20	E91.919.194	Lock Nut, 10-24 UNC		2
21	E91.919.290	Wiring Harness		1
22	E91.919.390	Shut-Off Switch Bracket		1
23	E91.919.190	Lock Nut, 5/8-11 UNC		4
24	E91.919.099	Hex Head Bolt, 5/8-11 UNC x 4 1/2"		4
25	E91.909.699	Wheel w/ Grease Fitting		4
26	E91.919.195	Stainless Rivet 1/8 dia x 1/4"		4
27	E91.909.093	Rubber Latch Kit		2
28	E91.919.293	Key		1
29	E91.909.799	Pulley, Clutch		2
30	E91.909.793	V-Belt, Cogged		2
31	E91.909.792	Lock Nut, 5/16-18 UNC		8
32	E91.919.497	Retractor Plate		1
33	E91.909.299	Nylock Nut, 1/4-2- UNC		1
34	E91.909.991	Flat washer, 1/4		3
35	E91.929.498	Hex head bolt, 5/16 - 18 UNC x 1 3/4		4
36	E91.909.498	Hex bolt, 1/4-20 UNC - 1 1/2"		1
37	E91.909.198	Pulley, Engine		2



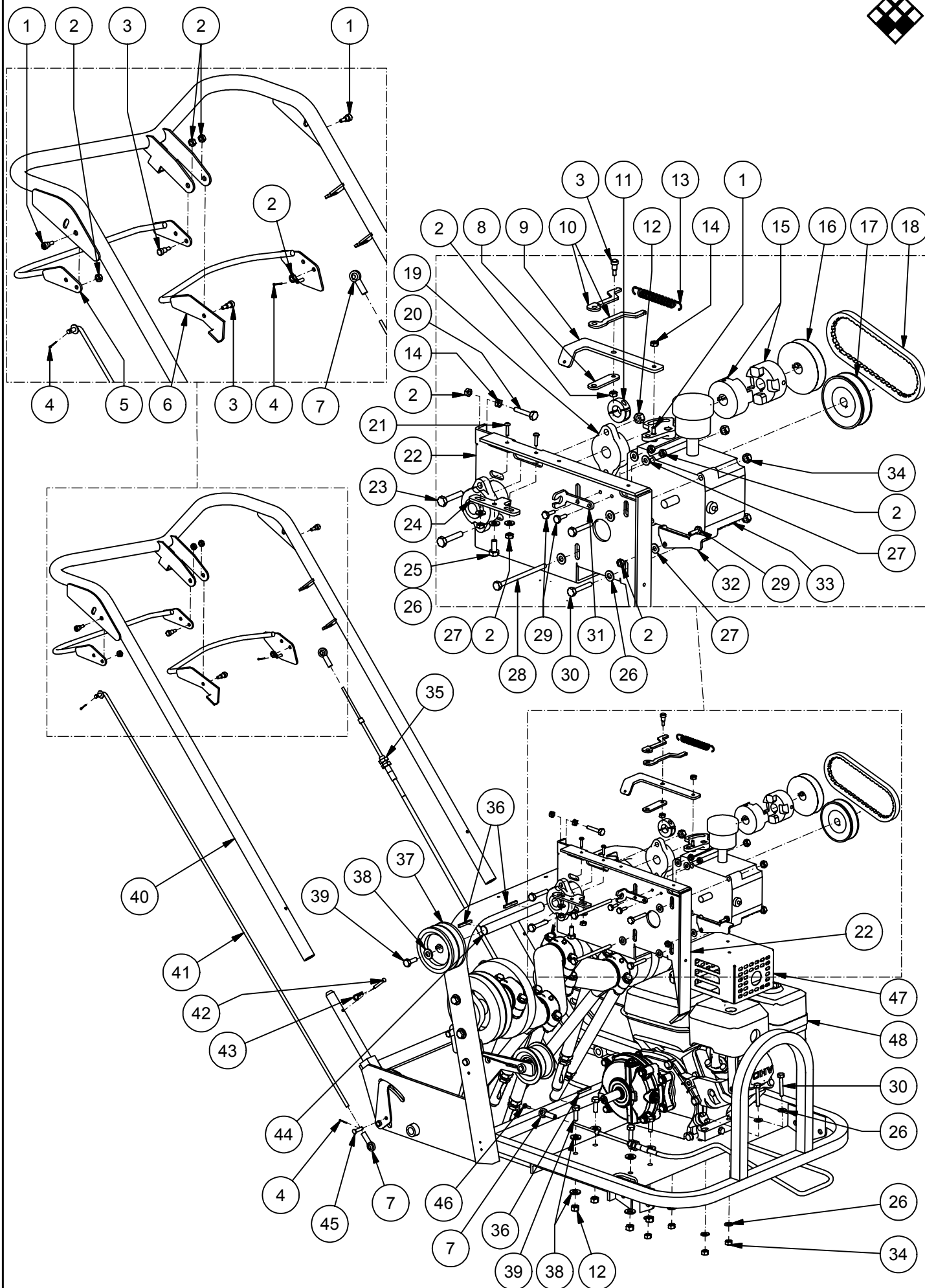
**Redexim-Charterhouse Easy Core 108 page 2 code 0912**

	PART #	DESCRIPTION	REMARKS	QUA
1	E91.909.492	Cartridge Bearing		2
2	E91.909.495	Lock Nut, 3/8-16 UNC		20
3	E91.909.592	Grease Fitting		8
4	E91.919.796	Tine Rod Cap		8
5	E91.919.492	Hex Head Bolt, 3/8-16 UNC x 2"		20
6	E91.909.494	Flat Washer, 3/8"		20
7	E91.929.394	Clevis Fitting, R.H.		1
8	E91.909.391	Cotter Pin, 1/16 dia x 3/4"		4
9	E91.909.797	Clevis Pin, 1/4 x 3/4"		2
10	E91.939.499	Clutch Handle Linkage		1
11	E91.909.697	Handle		1
12	E91.929.899	Clutch Control Bar		1
13	E91.919.797	Journal Bearing		16
14	E91.919.795	Tine Rod		8
15	E91.909.691	Hex Jam Nut, 5/8-18 UNF		8
16	E91.909.597	Standard Hollow Tine, 5/8" (22x16x70 mm)		8
	E91.919.499	Optional Solid Tine, 7/8" (22x70 mm)		8
	E91.919.590	Optional Hollow Tine, 3/8" (16x9,5x70 mm)		8
	E91.919.591	Optional Solid Tine, 3/8" (9,5x70 mm)		8
	E91.919.592	Optional Hollow Tine, 1 1/2" (45x38x70 mm)		8
17	E91.909.798	Hex Head Bolt, 1/2-13 UNC x 2 1/2"		1
18	E91.909.799	Pulley, Clutch		2
19	E91.909.992	1/2" Machine Bushing		1
20	E91.919.397	Clutch Bracket		1
21	E91.919.398	Torsion Spring		1
22	E91.909.196	Lock Nut, 5/16-18 UNC		2
23	E91.919.491	Shoulder Bolt, 3/8-16 UNC x 1 3/8"		1
24	E91.919.095	Clevis Pin 3/16 dia x 1 1/4"		2
25	E91.919.096	Hair Pin		2
26	E91.919.593	Pivot Plate		1
27	E91.919.598	Shoulder Bolt, 5/16 dia x 1/4"		1
28	E91.909.299	Nylock Nut, 1/4-2- UNC		1
29	E91.919.596	Clutch Linkage		1
30	E91.929.395	Clevis Fitting, L.H.		1
31	E91.919.991	Flat washer, 1/4		3



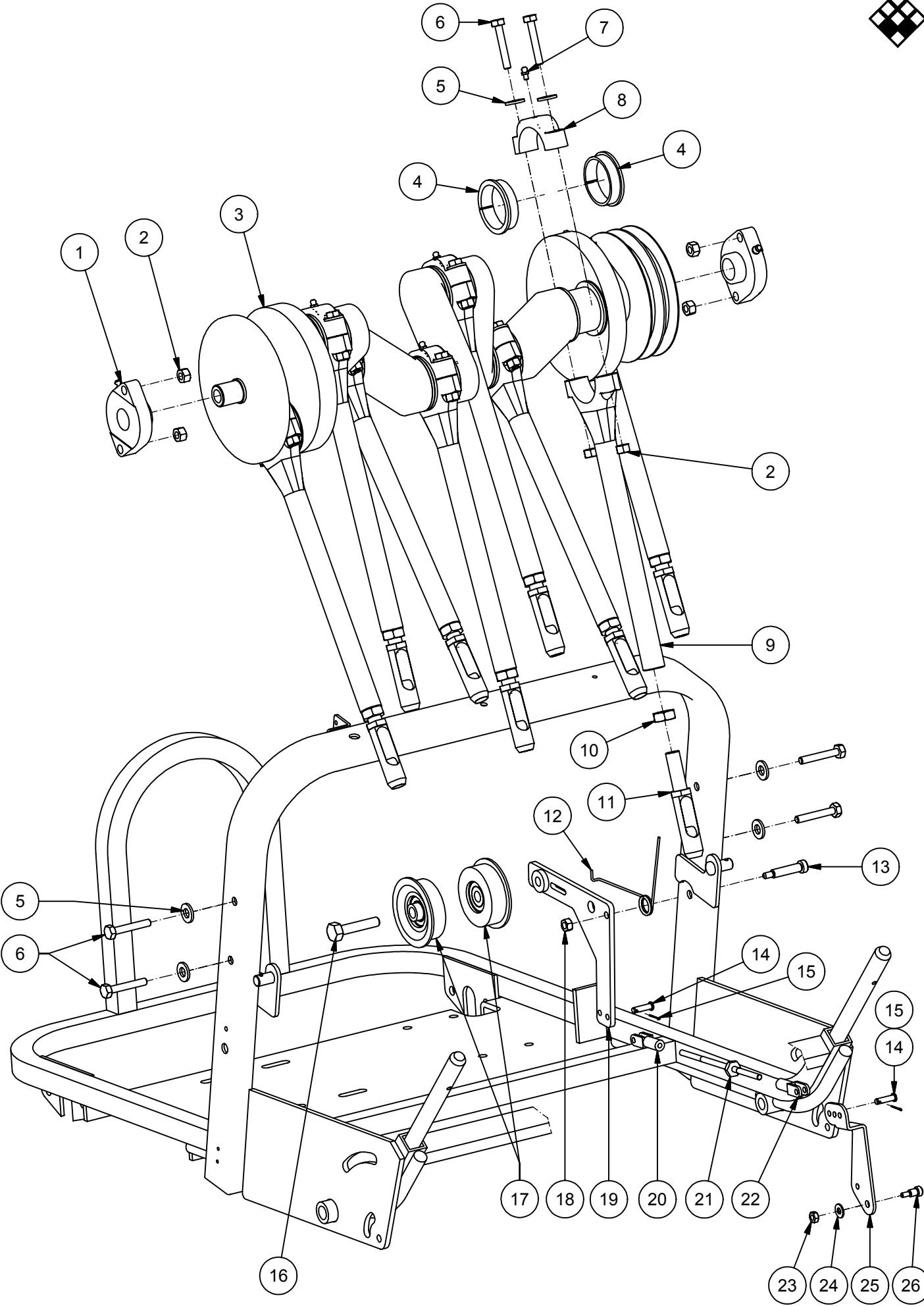
**Redexim-Charterhouse Easy Core 208 page 1 code 0912**

	PART #	DESCRIPTION	REMARKS	QUA
1	E91.929.091	Retractor Handle		1
2	E91.909.391	Cotter Pin, 1/16 dia x 3/4"		1
3	E91.909.797	Clevis Pin, 1/4 x 3/4"		3
4	E91.929.195	Retractor Control Rod		1
5	E91.919.194	Lock Nut, 10-24 UNC		2
6	E91.919.595	Cover Screw, 1/4-20 SHCS x 1 3/4"		1
7	E91.929.193	Cover		1
8	E91.919.794	Pivot Braket L.H.		1
9	E91.919.196	Vibration Dampener		4
10	E91.919.299	Safety Switch		1
11	E91.919.193	Stainless Steel Button Head Screw, 10-24 UNC x 1/2"		3
12	E91.919.290	Wiring Harness		1
13	E91.929.192	Hydrostat Guard		1
14	E91.909.793	V-Belt, Cogged, 38"		2
15	E91.929.792	Eye bolt 1/2" dia x 1/4-20 UNC		1
16	E91.919.497	Retractor Plate		1
17	E91.919.190	Lock Nut, 5/8-11 UNC		2
18	E91.929.390	Tire, Rear		2
19	E91.909.693	Flat Washer, 5/8"		2
20	E91.919.099	Hex Head Bolt, 5/8-11 UNC x 4 1/2"		2
21	E91.959.293	Cotter Pin 1/8" dia x 1"		2
22	E91.919.793	Pivot Bracket R.H.		1
23	E91.919.699	Pivot Bushing		2
24	E91.919.493	Hex Head Bolt, 5/16-18 UNC x 1 1/2"		4
25	E91.909.195	Flat Washer, 5/16"		8
26	E91.909.792	Lock Nut, 5/16-18 UNC		4
27	E91.929.299	Snap Ring, 7/16"		1
28	E91.929.092	Drive Axle		1
29	E91.919.195	Rivet		4
30	E91.909.093	Rubber Latch Kit		2
31	E91.929.294	No 40 Roller Chain		1
32	E91.929.391	Tire, Front		2
33	E91.909.494	Flat Washer, 3/8"		2
34	E91.929.590	Locker Washer, 3/8"		2
35	E91.929.594	Hex Head Bolt, 3/8-16 UNC x 2 3/4"		2
36	E91.929.295	Sprocket, 11-tooth		1
37	E91.909.991	Flat Washer, 1/4"		3
38	E91.919.892	Split Lock Washer, 1/4"		3
39	E91.929.593	Hex Head Bolt, 1/4-20 UNC x 1/2"		3
40	E91.959.299	Shaft Lock Collar		2
41	E91.909.495	Lock Nut, 3/8-16 UNC		4
42	E91.929.392	Flange Cartridge Bearing, 3/4"		2
43	E91.929.296	Sprocket, 43-tooth		1
44	E91.929.393	Key, 3/16 x 1 1/2"		3
45	E91.929.291	Sleeve		2



**Redexim-Charterhouse Easy Core 208 page 2 code 0912**

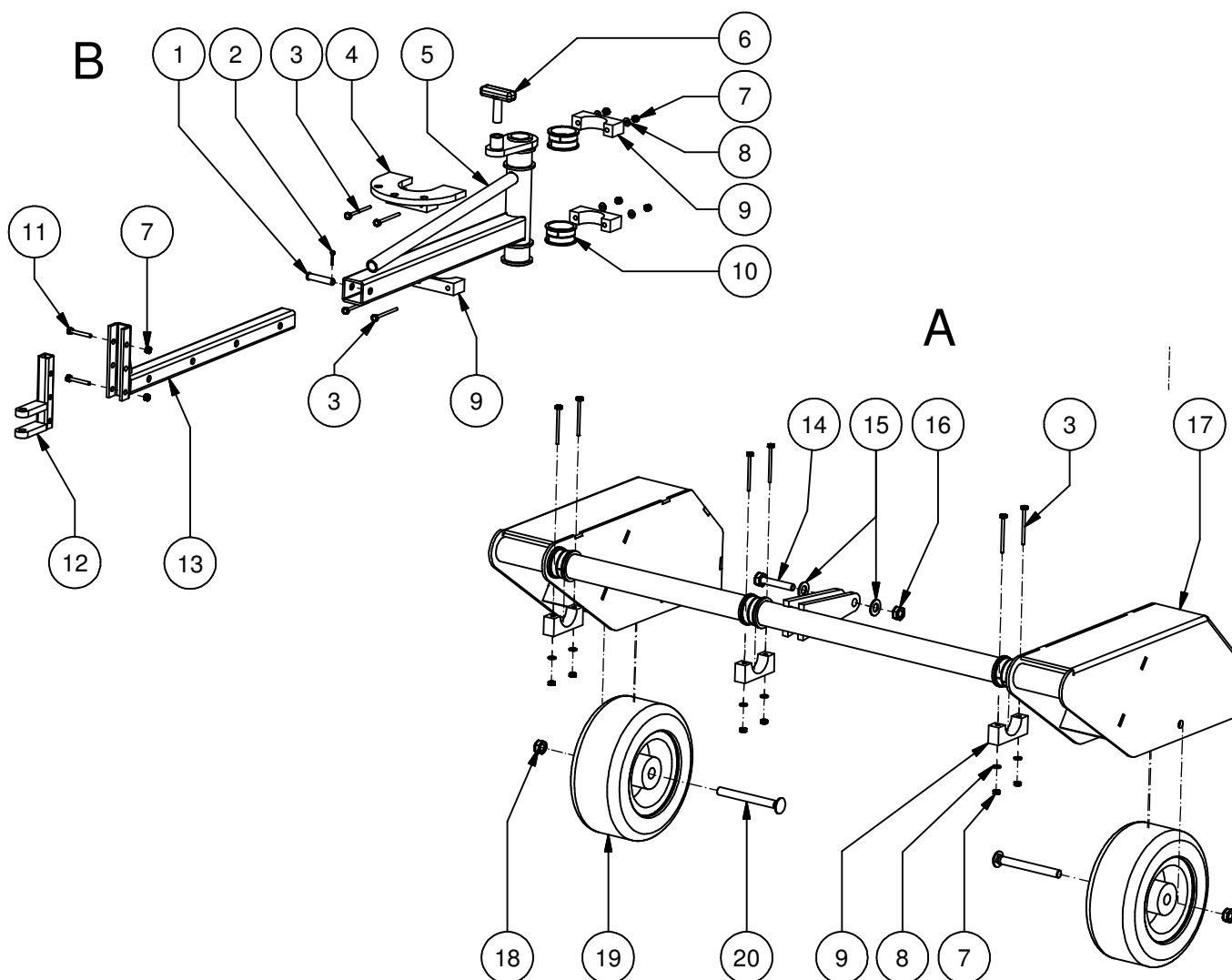
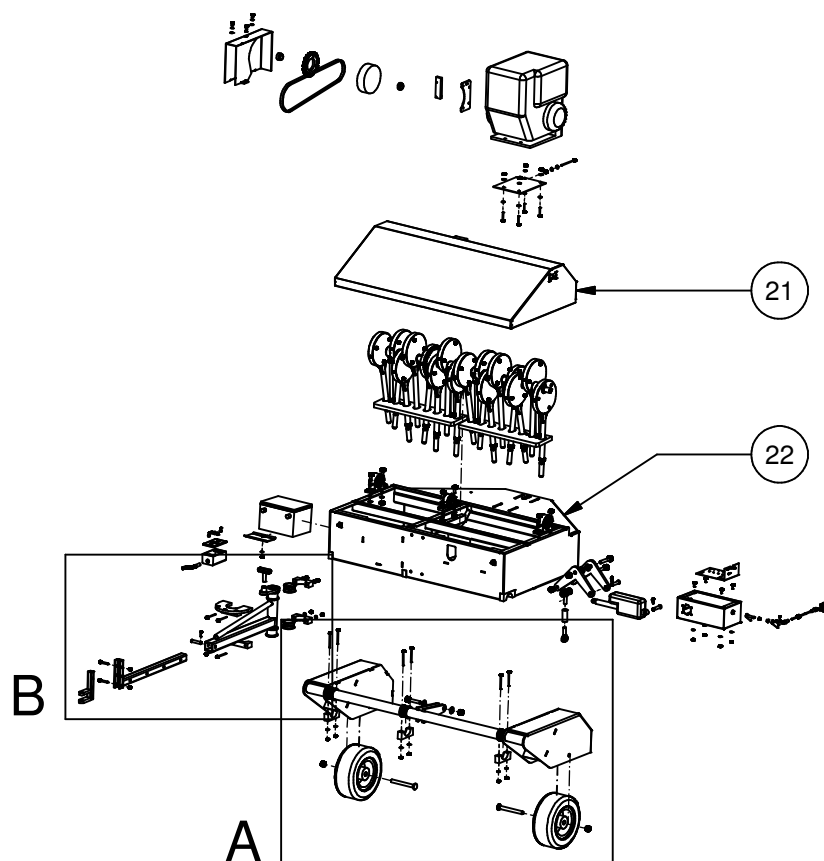
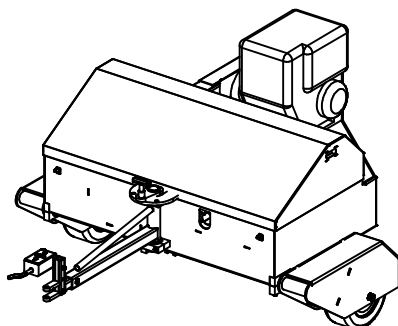
		DESCRIPTION	REMARKS	QUA
1	E91.919.598	Shoulder Bolt, 5/16 dia x 1/4"		3
2	E91.929.494	Lock Nut, 1/4-20 UNC		11
3	E91.929.497	Shoulder Bolt, 5/16 dia x 3/8" Long		3
4	E91.909.391	Cotter Pin, 1/16 dia x 3/4"		3
5	E91.929.093	Clutch Control Lever		1
6	E91.929.094	Hydrostat Control Lever		1
7	E91.929.397	Spherical Rod End		3
8	E91.929.097	Retainer Link		1
9	E91.929.190	Pump Throttle Actuator		1
10	E91.929.098	Throttle Return Arm, Formed		2
11	E91.959.299	Shaft Lock Collar		2
12	E91.909.495	Lock Nut, 3/8-16 UNC		6
13	E91.929.292	Throttle Return Spring		1
14	E91.909.299	Deformed Nut, 1/4-20 UNC		2
15	E91.929.290	Coupling Half		2
16	E91.909.198	Pulley, Engine		1
17	E91.939.496	Pulley, Hydrostat		1
18	E91.929.298	V-Belt, Cogged, 20"		1
19	E91.929.392	Flange Cartridge Bearing, 3/4"		2
20	E91.909.498	Hex Head Bolt, 1/4-20 UNC x 1 1/2"		1
21	E91.929.495	Button Head Screw, 1/4-20 UNC x 3/4"		2
22	E91.919.999	Hydrostat Mounting Bracket		1
23	E91.929.499	Hex Head Bolt, 3/8-16 UNC x 1 3/4"		2
24	E91.929.099	Throttle Centering Arm		1
25	E91.929.491	Hex Head Bolt, 5/8-16 UNC x 1/2"		1
26	E91.909.195	Flat Washer, 5/16"		11
27	E91.909.991	Flat Washer, 1/4"		5
28	E91.929.596	Hex Head Bolt, 5/16-18 UNC x 4 1/2"		2
29	E91.929.592	Hex Head Bolt, 1/4-20 UNC x 3/4"		3
30	E91.929.498	Hex Head Bolt, 5/16-18 UNC x 1 3/4"		6
31	E91.959.391	Cable Mount		1
32	E91.929.191	Hydrostat Override Lever		1
33	E91.929.297	Pump/Gear Motor		1
34	E91.909.792	Lock Nut, 5/16-18 UNC		8
35	E91.929.399	Hydrostat Drive Cable		1
36	E91.929.393	Key, 3/16 x 1 1/2"		3
37	E91.929.293	Pulley, Double Belt, EC208		1
38	E91.909.494	Flat Washer, 3/8"		9
39	E91.969.192	Hex Head Bolt, 3/8-16 UNC x 1"		5
40	E91.929.095	Handle		1
41	E91.929.196	Clutch Control Rod		1
42	E91.919.095	Clevis Pin, 3/16 x 1 1/4"		2
43	E91.919.096	Hair Pin Cotter		2
44	E91.929.096	Jack Shaft		1
45	E91.909.797	Clevis Pin, 1/4 x 3/4"		1
46	E91.919.193	Button Head Screw, 10-24 UNC x 3/4"		1
47	E91.919.29H	CE Required Muffler Guard		1
48	E91.909.89H	Engine, Honda 6.5 HP OHV		1





**Redexim-Charterhouse Easy Core 208 page 3 code 0912**

	PART #	DESCRIPTION	REMARKS	QUA
1	E91.909.492	Cartridge Bearing		2
2	E91.909.495	Lock Nut, 3/8-16 UNC		20
3	E91.959.292	Crankshaft		1
4	E91.919.797	Journal Bearing		16
5	E91.909.494	Flat Washer, 3/8"		20
6	E91.919.492	Hex Head Bolt, 3/8-16 UNC x 2"		20
7	E91.909.592	Grease Fitting		8
8	E91.919.796	Tine Rod Cap		8
9	E91.919.795	Tine Rod		8
10	E91.909.691	Hex Jam Nut, 5/8-18 UNF		8
11	E91.909.597	Standard Hollow Tine, 5/8" (22x16x70 mm)		8
	E91.919.499	Optional Solid Tine, 7/8" (22x70 mm)		8
	E91.919.590	Optional Hollow Tine, 3/8" (16x9,5x70 mm)		8
	E91.919.591	Optional Solid Tine, 3/8" (9,5x70 mm)		8
	E91.919.592	Optional Hollow Tine, 1 1/2" (45x38x70 mm)		8
12	E91.919.398	Torsion Spring		1
13	E91.919.491	Shoulder Bolt, 3/8" x 1 3/8"		1
14	E91.909.797	Clevis Pin, 1/4 x 3/4"		2
15	E91.909.391	Cotter Pin, 1/16 dia x 3/4"		2
16	E91.909.798	Hex Head Bolt, 1/2-13 UNC x 2 1/2"		1
17	E91.909.799	Pulley, Clutch		2
18	E91.909.792	Lock Nut, 5/16-18 UNC		1
19	E91.919.397	Clutch Bracket		1
20	E91.929.395	Clevis Fitting, L.H.		1
21	E91.929.199	Turnbuckle Arm		1
22	E91.929.394	Clevis Fitting, R.H.		1
23	E91.929.494	Lock Nut, 1/4-20 UNC		1
24	E91.909.991	Flat Washer, 1/4"		1
25	E91.929.194	Clutch Pivot Plate		1
26	E91.929.497	Shoulder Bolt, 5/16 dia x 1/4" Long		1



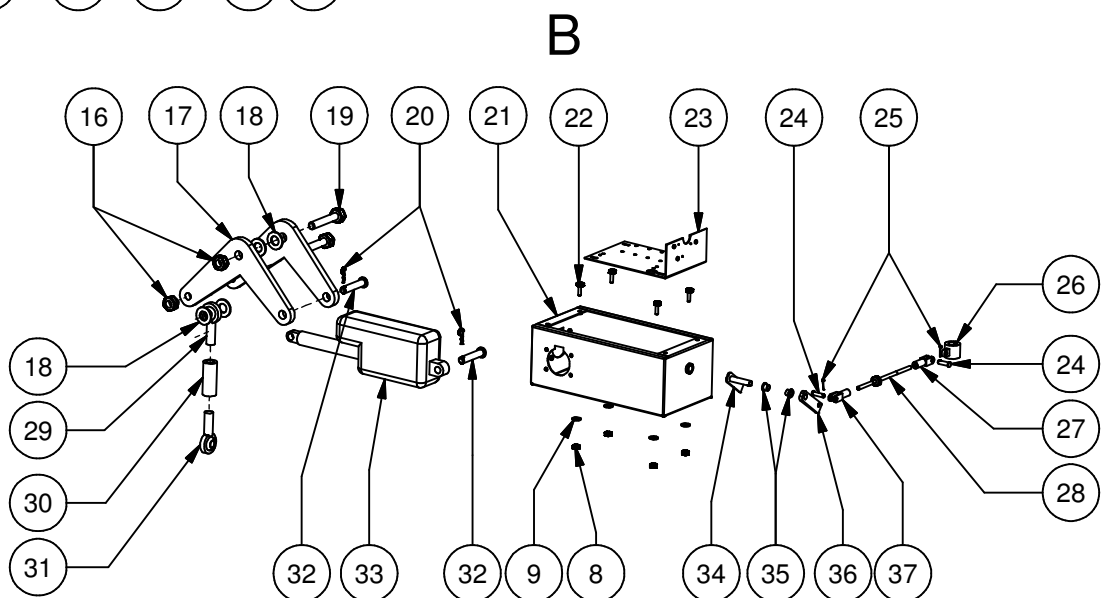
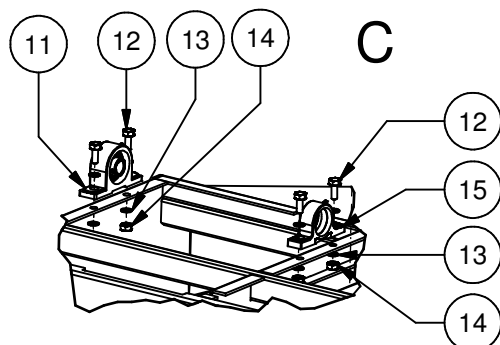
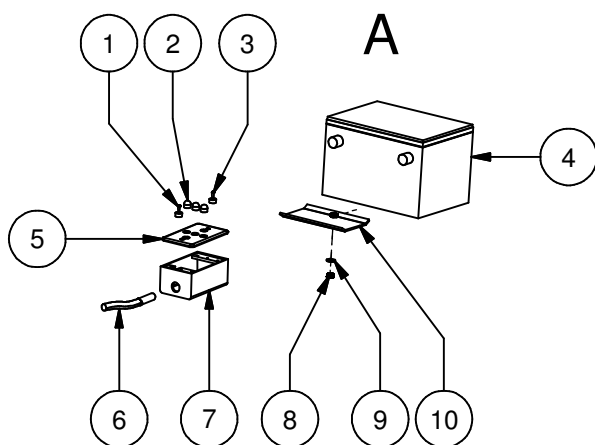
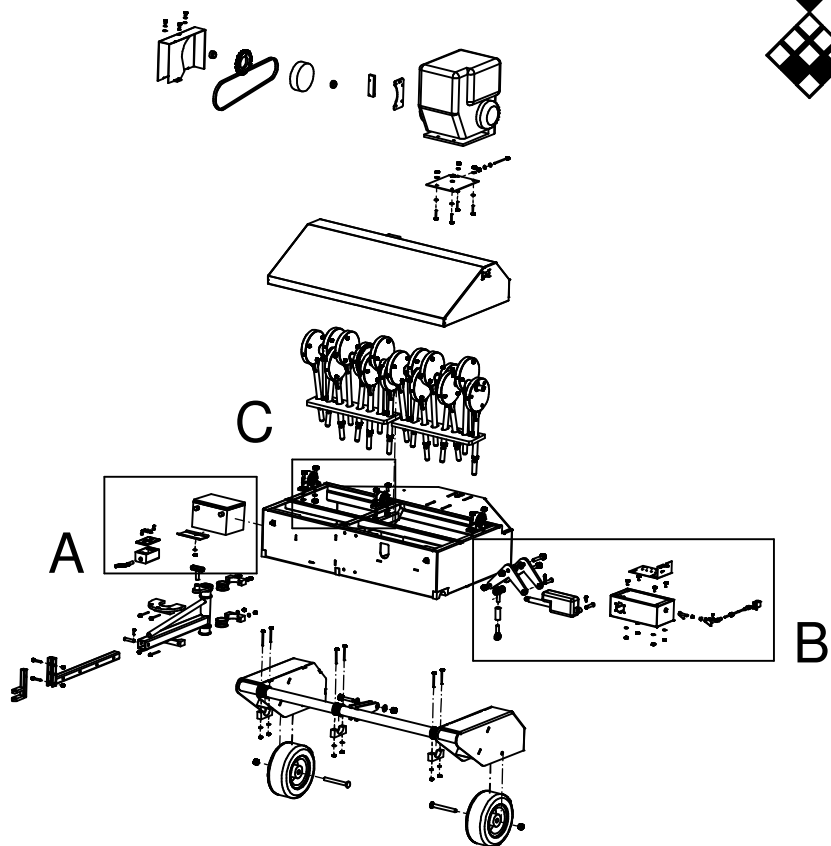
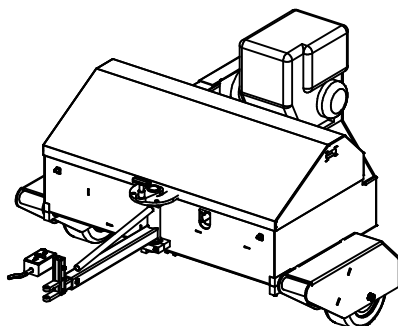
**Redexim-Charterhouse Easy Core 116 page 1 code 0912**

	PART #	DESCRIPTION	REMARKS	QUA
1	E91.939.397	Clevis Pin, 1/2 x 2 1/2"		1
2	E91.959.293	Cotter Pin 1/8" dia x 1"		1
3	E91.939.392	Hex bolt, 5/16-18 x 4"		10
4	E91.929.797	Tongue retainer		1
5	E91.929.796	Tongue		1
6	E91.939.493	T-handle		1
7	E91.909.299	Nylock nut, 1/4 - 20 UNC		12
8	E91.909.991	Flat washer, 1/4		10
9	E91.929.798	Bearing cap		6
10	E91.919.797	Journal bearing		10
11	E91.939.393	Hex bolt, 1/4 - 20 UNC x 2		2
12	E91.939.094	Hitch clevis		1
13	E91.939.093	Clevis bar		1
14	E91.939.391	Hex bolt, 5/8 - 11 UNC x 3", grade 8		1
15	E91.909.693	Flat washer, 5/8		2
16	E91.919.190	Lock nut, 5/8 - 11 UNC		1
17	E91.929.795	Axle		1
18	E91.939.399	Prevail nut, 5/8 - 11 UNC		2
19	E91.939.194	Wheel		2
20	E91.939.398	arriage bolt, 5/8 - 11 UNC x 6		2
21	E91.929.793	Tine cover		1
22	E91.929.794	Frame		1



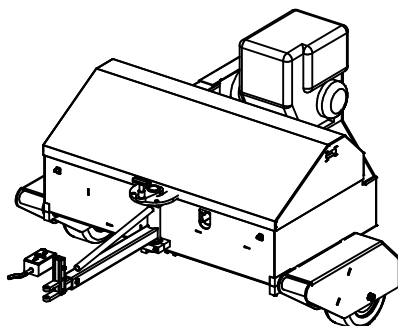
**Redexim-Charterhouse Easy Core 116 page 2 code 0912**

	PART #	DESCRIPTION	REMARKS	QUA	
1	E91.929.892	Crankshaft, driven		1	
2	E91.929.891	Crankshaft, driver		1	
3	E91.909.594	Woodruff key		19	
4	E91.909.598	Spacer, short		2	
5	E91.909.599	Spacer, long		9	
6	E91.939.196	Sprocket, large		1	
7	E91.929.893	Shaft coupler		1	
8	E91.909.498	Hex bolt, 1/4-20 UNC - 1 1/2"		30	
9	E91.939.295	Cam Alignment plate, machined		6	
10	E91.939.193	Retractor plate, 8 tines		2	
11	E91.909.690	Hanger rod bearing w/bushing		4	
12	E91.909.299	Nylock nut, 1/4 - 20 UNC		48	
13	E91.909.592	Grease fitting		16	
14	E91.909.691	Hex jam nut, 5/8-18 UNF		12	
15	E91.909.692	Hanger rod		4	
16	E91.909.693	Flat washer, 5/8		8	
17	E91.909.593	Cam bearing		16	
18	E91.909.591	Cam, machined		16	
19	E91.939.296	Screw, flat head, 1/4-20 UNC x 1 1/2		18	
20	E91.909.590	Tine casting		16	
21	E91.909.596	Hex jam nut, 5/8-11 UNC		16	
22	E91.909.499	Cam alignment plate		26	
23	E91.909.597	Standard Hollow Tine, 5/8" (22x16x70 mm)		16	
	E91.919.499	Optional Solid Tine, 7/8" (22x70 mm)		16	
	E91.919.590	Optional Hollow Tine, 3/8" (16x9,5x70 mm)		16	
	E91.919.591	Optional Solid Tine, 3/8" (9,5x70 mm)		16	
	E91.919.592	Optional Hollow Tine, 1 1/2" (45x38x70 mm)		16	

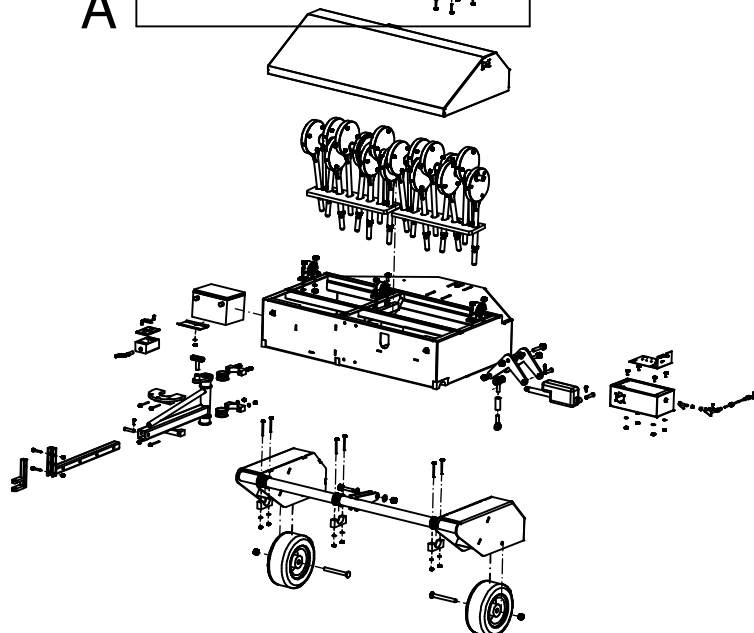
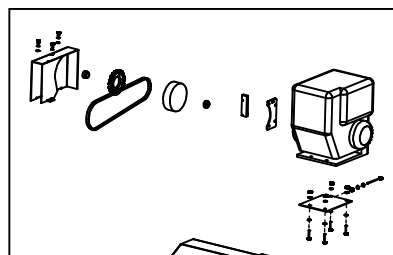


**Redexim-Charterhouse Easy Core 116 page 3 code 0912**

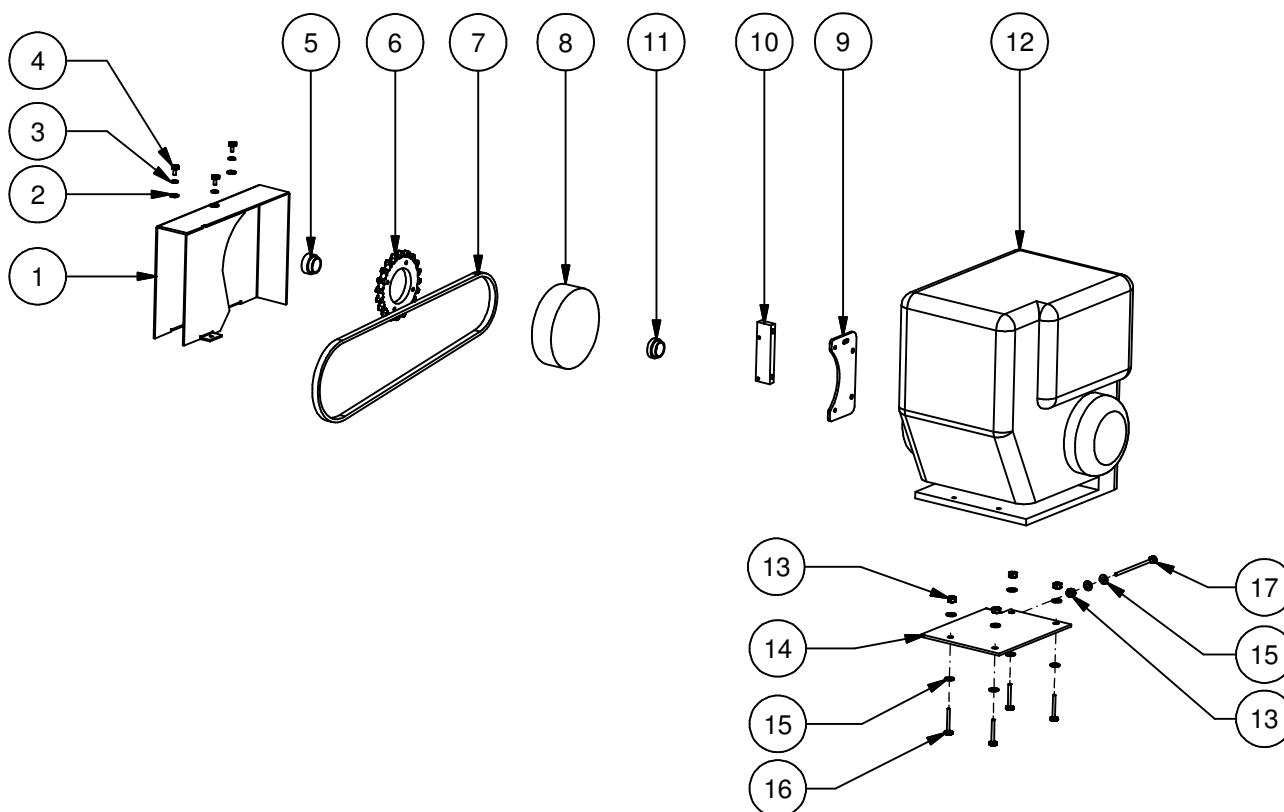
	PART #	DESCRIPTION	REMARKS	QUA
1	E91.939.293	Switch, toggle		1
2	E91.939.292	Led	2x Red, 1x Green	3
3	E91.939.490	Switch, momentary		1
4	E91.939.290	Battery		1
5	E91.939.099	Control box cover		1
6	E91.939.492	Cable		1
7	E91.939.291	Control box		1
8	E91.909.299	Nylock nut, 1/4 - 20 UNC		5
9	E91.909.991	Flat washer, 1/4		5
10	E91.929.995	Battery hold-down		1
11	E91.939.191	Pillow bloch, standard		2
12	E91.939.390	Hex bolt, 1/2 - 13 UNC x 2"		6
13	E91.939.299	Flat washer, 1/2		12
14	E91.929.699	Nylock nut, 1/2		6
15	E91.939.192	Pillow block, machined		1
16	E91.919.190	Lock nut, 5/8 - 11 UNC		2
17	E91.939.095	Lift actuator plate		2
18	E91.909.693	Flat washer, 5/8		4
19	E91.939.391	Hex bolt, 5/8 - 11 UNC x 3", grade 8		2
20	E91.919.096	Cotter pin, hair		2
21	E91.939.098	Electrical box		1
22	E91.929.592	Hex bolt, 1/4 - 2- UNC x 3/4"		4
23	E91.929.999	Electrical box panel		1
24	E91.909.797	Clevis pin, 1/4 x 3/4		2
25	E91.909.391	Cotter pin, 1/16 dia x 3/4		2
26	E91.939.091	Retractor yoke plate		1
27	E91.929.394	Clevis fitting, RH		1
28	E91.929.199	Turnbuckle arm		1
29	E91.939.396	Rod end, LH		1
30	E91.939.190	Rod end coupler		1
31	E91.939.395	Rod end, RH		1
32	E91.939.397	Clevis pin, 1/2 dia x 2 1/2		2
33	E91.939.494	Actuator		1
34	E91.939.090	Sensor target		1
35	E91.939.294	Electrical box bushing		2
36	E91.939.092	Actuator arm		1
37	E91.929.395	Clevis Fitting, LH		1



A



A





**Redexim-Charterhouse Easy Core 116 page 4 code 0912**

	PART #	DESCRIPTION	REMARKS	QUA
1	E91.929.998	Chain guard		1
2	E91.909.991	Flat washer, 1/4		3
3	E91.939.394	Lock washer, 1/4		3
4	E91.919.891	Hex bolt, 1/4 - 20 UNC x 1/2		3
5	E91.929.992	Clutch cap		1
6	E91.939.197	Sprocket, small		1
7	E91.939.199	Chain		1
8	E91.939.198	Clutch		1
9	E91.929.993	Clutch plate		1
10	E91.939.097	Clutch plate spacer		1
11	E91.929.994	Clutch spacer		1
12	E91.939.195	Motor, Kohler 12 HP		1
13	E91.909.792	Lock Nut, 5/16-18 UNC		5
14	E91.929.997	Tightener plate		1
15	E91.909.195	Flat Washer, 5/16"		10
16	E91.929.498	Hex bolt, 5/16 - 18 UNC x 1 3/4"		4
17	E91.939.298	Hex bolt, 5/16-18 UNC x 3 1/2"		1